

# Product Description



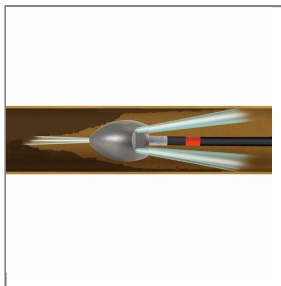
The choice of perfection

PRODUCT NO.: 649110419080

## SEWER NOZZLE EGG 1/2" F 1XF; 9XR 080



Nozzle size 080  
Flow: 80 - 140L/min.  
Inlet: 1/2" F  
Front jet: 1 x 0°  
Rear jets: 6 x 75° and 3 x 30°  
For pipe diameter: 120 - 250 mm  
Outside diameter 40 mm  
Length: 70 mm  
Weight: 630 g  
Material: Hardened stainless steel.  
Max. 500 bar / 150°C



### Technical data

Druck	500 bar
-------	---------