

# Product Description



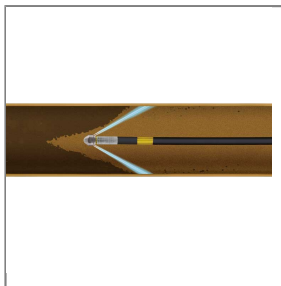
PRODUCT NO.: 12000675

## NOZZLE ST-49 1/4F 060 6X0,75 HARDENED SS



ST-49 sewer cleaning nozzles with female thread  
Without centric hole  
Nozzle 060  
Rear jets 6x0.75  
Inlet: 1/4" F  
Diameter: 22 mm  
Material: Hardened stainless steel  
Max. 500 bar / 30l/min.

Due to its very compact design this is the ideal solution for tight elbows. Rear jets for maximum thrust and best wall coverage.



### Technical data

Pressure	500 bar
----------	---------