

# Slot Drain Cleaner



The choice of perfection



## Application areas:

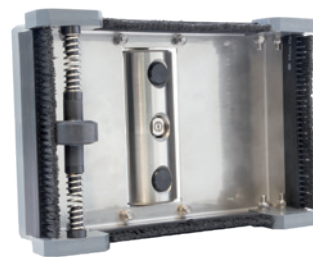
Slot drain cleaning for terraces, driveways, water feature installations, swimming pools and leisure pools.

In civil engineering, food industry, air- or seaports and in gardening and landscaping.

Robust stainless steel design

## Slot drain cleaner for clean linear drainage

- Robust stainless steel design.
- One 1/4" nozzle NPT is required.
- Centered guide roller for precise, central use.
- Can be used centered or sideways, for cleaning directly on stairs or walls.
- A nozzle protector for the adapter is included in the scope of delivery.
- By using the adapter, you can quickly switch to high-pressure cleaning with a lance. The nozzle protector is quickly installed and always ready to hand.
- Depending on your needs, the angle of the cleaning nozzle can be changed on the axis in order to reach the dirt even at the end of the slot.



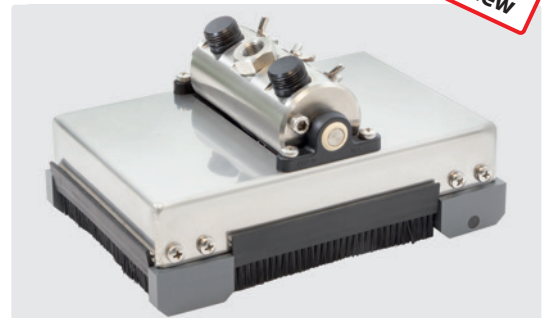
**Spray angle of the nozzle:** We recommend 65° nozzles for the best possible cleaning results. Spring holder with central guide roller for safe guidance in the slot.



**Included in delivery:** Nozzle adapter for a 1/4" NPT nozzle and nozzle protector.

## Slot Drain Cleaner

new



Stainless steel/plastic. Incl. nozzle adapter for 1/4" NPT nozzle and nozzle protector.

Max. 90 °C / 20 l/min.

H x W x L= 150 x 150 x 220 mm. 2.4 kg

R+M Nr.	inlet	outlet	pressure
710 100 700	1/4" F	1/4" F NPT	max. 200 bar

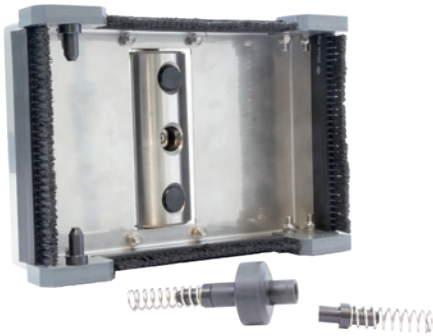
## Technical specs

Max. pressure	200 bar
Max. temperature	90 °C
Inlet / Outlet	1/4" IG / 1/4" IG NPT
Material	abrasion-resistant plastic/ stainless steel
Max. flow rate	20 l/min.
Dimensions H x W x L	150 x 150 x 220 mm
Weight	2.4 kg

# Slot Drain Cleaner



The choice of perfection



**For easy cleaning:** Removing the spring holder is possible in just a few steps.



**Robustly manufactured:** With abrasion-resistant plastic sliders. Brush elements on the sides to prevent flying dirt.



**User side:** With adapter for the nozzle and the use of a lance to insert into the slot drain cleaner.



**Lance outlet:** Lance with screwed-on nozzle adapter and screwed-in 1/4" NPT nozzle for quick lance changes.



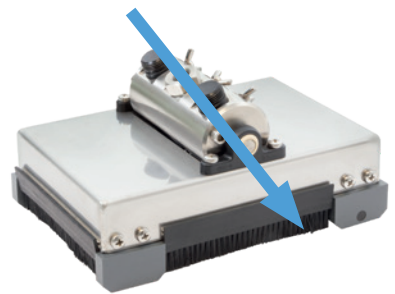
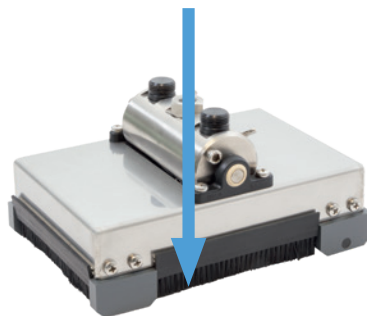
**Quick change:** The adapter is designed so that the nozzle protection can be screwed on directly if necessary, even during gutter cleaning work. A quick switch to high-pressure cleaning with a lance is possible.



**Well thought out:** Nozzle can be used in the middle or on the side. Here with additional storage for the nozzle protection, which doesn't get lost. Attachment is possible without any tools.



**Easy to store:** With the wing screw loosened, the lance can be inserted into the nozzle holder provided as far as it will go. After tightening the screw connection, the gutter cleaner and lance can be stored upright.



**Different angles for changing the spray angle:** The dirt can be effortlessly swept forward and even be caught at the end of the slot.