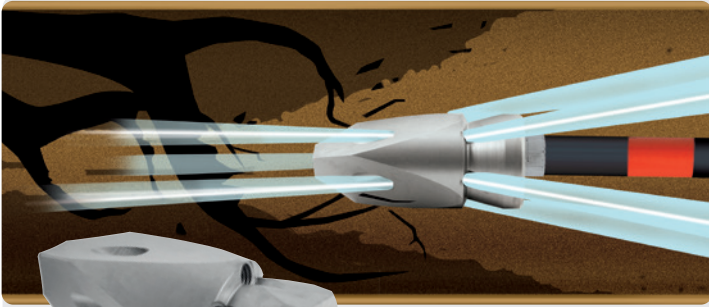




Everything for sewer cleaning applications

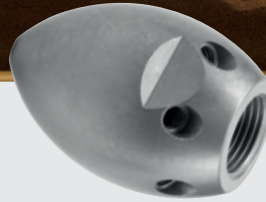
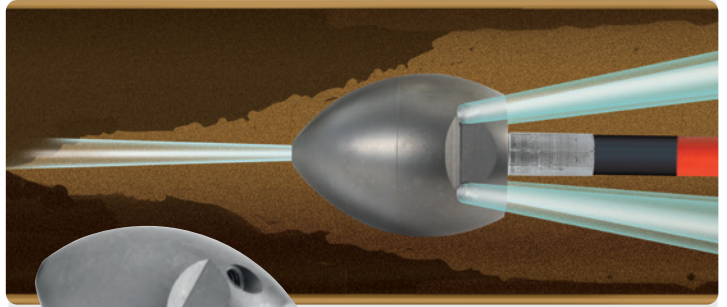
Everything for sewer cleaning applications

Milling Type Nozzles ST-49



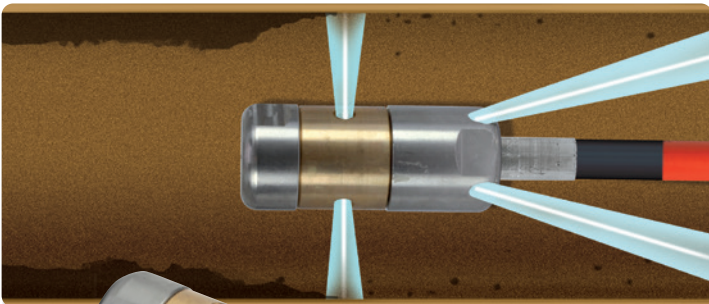
Page 7

Egg Type Nozzles



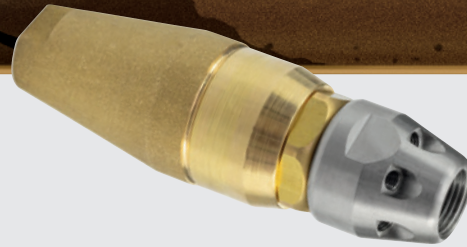
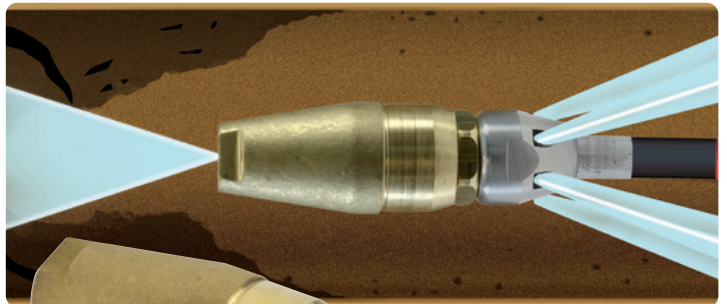
Page 6

ST-49.2 Rotating Nozzles



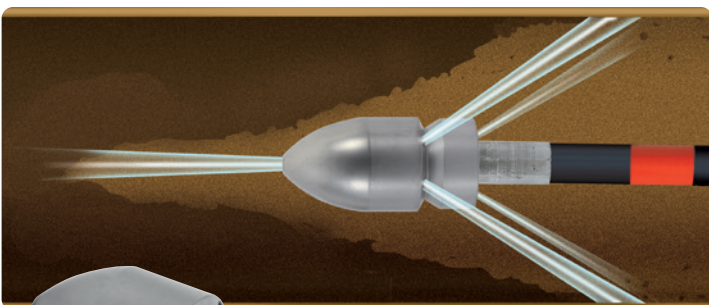
Page 10

Rotating Nozzles with Drivers



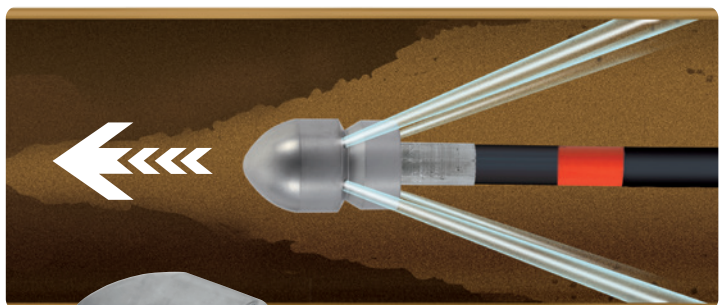
Page 11

ST-49 Ball Type Nozzles, 30°



Page 8

ST-49 Ball Type Nozzles, 20°



Page 9

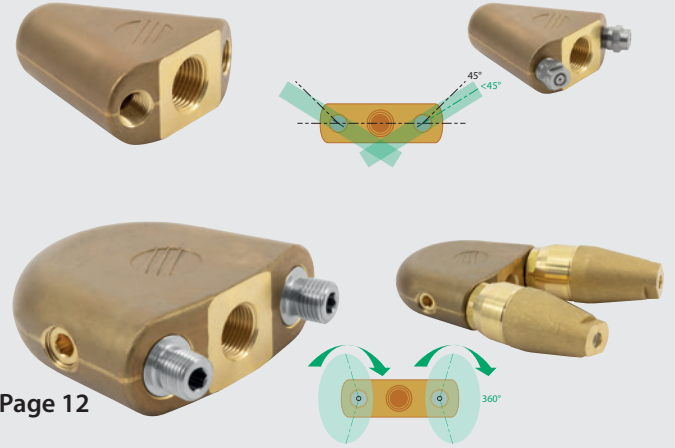
Everything for sewer cleaning applications

Cleaning guns



Page 14

Small Plough Jet Nozzles

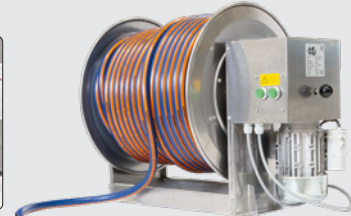


Page 12

Sewer Cleaning Hoses

sewerstar365+ rubber-sewer cleaning hose

According to ISO 7751



- » highly abrasion-resistant with an extremely long operating life
- » high flexibility by especially developed rubber compound
- » extremely abrasion-resistant, ageing resistant and weather-resistant surface
- » easy handling by low weight

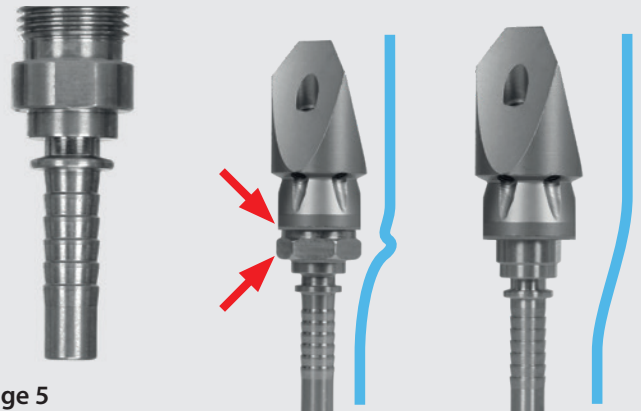
- » excellent pressure resistance and tensile strength
- » very low bending radius
- » wire braid for high stability
- » interior and surface are made out of NBR/SBR
- » -40 °C - +150 °C, -40 °F - +302 °F

Page 4

Special Fittings

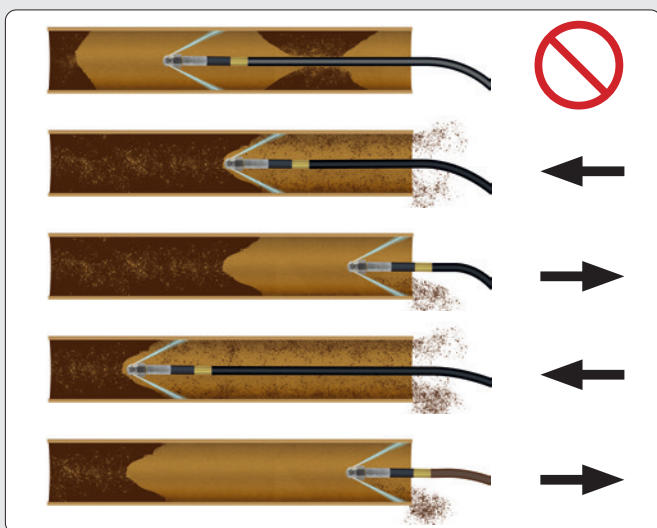
Crimp nipples

- » reduced flow resistance
- » no clogging



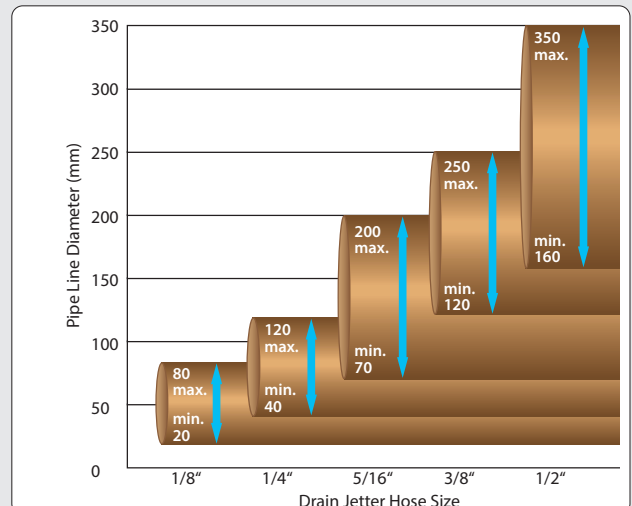
Page 5

Practice



Working in waves: The deposits are flushed back to the inlet in between. This prevents the nozzle from overflowing a deposit and becoming wedged in the pipe.

Drain Jetter Hose size



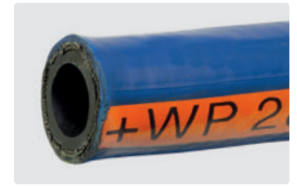
Everything for sewer cleaning applications

Sewer cleaning hose assemblies

sewerstar365+ rubber-sewer cleaning hose

- » highly abrasion-resistant with an extremely long operating life
- » high flexibility by especially developed rubber compound
- » extremely abrasion-resistant, ageing resistant and weather-resistant surface

- » easy handling by low weight
- » excellent pressure resistance and tensile strength
- » very low bending radius
- » wire braid for high stability
- » interior and surface are made out of NBR/SBR
- » -40 °C - +150 °C, -40 °F - +302 °F

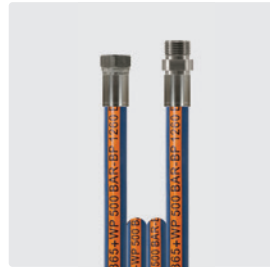


DKR : M

1/2" : 1/2"



3/8" : 3/8"



3/8" : 1/4"



DN	P	⊗	⊘	BP	↔
08	500 bar	7.9 mm	15.0 mm	1,260 bar	40 m 80 m
10	280 bar	9.8 mm	16.9 mm	740 bar	40 m 60 m 80 m 100 m 120 m
12	250 bar	12.7 mm	22.6 mm	640 bar	40 m 60 m 80 m 100 m 120 m

R+M Nr.
432 557 100 040
432 557 100 060
432 557 100 080
432 557 100 100
432 557 100 120
432 557 120 040
432 557 120 060
432 557 120 080
432 557 120 100
432 557 120 120

R+M Nr.
432 558 080 040
432 558 080 080
432 558 100 040
432 558 100 060
432 558 100 080
432 558 100 100
432 558 100 120

R+M Nr.
432 556 080 040
432 556 080 080

R+M service

In case of an order for hose reels and hose please be informed that we are willingly prepared to directly mount the assembled hose on your desired hose reel.

For this purpose you only have to state the **R+M Nr. 740 00** on your order.

It's definitely worth booking this service!

Should you require more information about our offer, do not hesitate to contact us at any time!

We are looking forward to receiving your order.

R+M Nr.

740 00



Symbols ⊕ inlet ⊖ outlet DN nominal diameter P pressure I height ↔ length Ⓜ weight ⊗ thread TYP type shipment by truck V voltage

Everything for sewer cleaning applications

Sewer cleaning hose assemblies

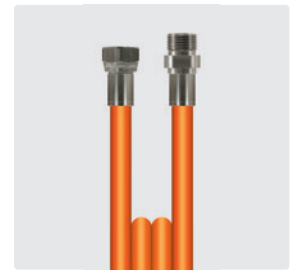
sewerclean365+ PU-sewer cleaning hose

- » cut- and abrasion-resistant
- » extremely long operating life
- » highly tearproof by two-fold braid of aramid fibres and polyurethane surface
- » good swimming features
- » ageing resistant and weather-resistant surface
- » -40 °C - +60 °C, -40 °F - +140 °F





DKR : M

1/2" : 1/2"



All hoses are supplied together with a test certificate according to EN 10204.3.1.1.

DN	P	⊙	∅	BP	↔
12	275 bar	12.7 mm	23.4 mm	840 bar	40 m
					60 m
					80 m
					100 m
					120 m

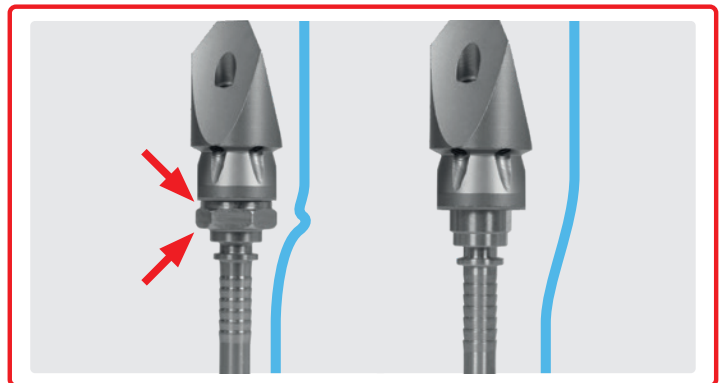
R+M Nr.
432 457 120 040
432 457 120 060
432 457 120 080
432 457 120 100 
432 457 120 120 

Nipples, pipe thread RR

Stainless steel. Flat sealing



R+M Nr.	DN	⊙
315 393	8	1/4"
315 593	8	3/8"
315 693	10	3/8"
315 663	12	1/2"



Everything for sewer cleaning applications

Egg-type Radial-Nozzles

Best performing and most durable design for higher efficiency. These are light and agile used as a great all around nozzle with replaceable inserts. They include a forward jet. The egg-type radial nozzle is wear resistant and cost competitive. Great for sanitary applications. With unrivaled cleaning power on heavy encrusted grease and sludge, hardened stainless steel body and replaceable nozzle inserts for longer life.

The ideal tool for the toughest applications of hard grease and scale that may be encrusted on the interior wall of the pipe. Material: Hardened stainless steel. Max. 500 bar / 150 °C



1/4" F. 6x 75° 3x 30° +1x 0°. 25-70 l/min. For $\text{R} \text{ } \varnothing$ 75-150 mm. Outside \varnothing 30 mm. g 223 g.



3/8" F. 6x 75° 3x 30° +1x 0°. 30-100 l/min. For $\text{R} \text{ } \varnothing$ 100-200 mm. Outside \varnothing 35 mm. g 314 g.



1/2" F. 6x 75° 3x 30° +1x 0°. 80-140 l/min. For $\text{R} \text{ } \varnothing$ 120-250 mm. Outside \varnothing 40 mm. g 630 g.



3/4" F. 6x 75° 3x 30° +1x 0°. 100-250 l/min. For $\text{R} \text{ } \varnothing$ 150-300 mm. Outside \varnothing 50 mm. g 1,367 g.

R+M Nr.	D	\varnothing
649 110 219 065	065	50
649 110 219 080	080	50
649 110 219 100	100	50
649 110 219 120	120	50
649 110 219 150	150	50
649 110 219 200	200	50

R+M Nr.	D	\varnothing
649 110 319 065	065	55
649 110 319 080	080	55
649 110 319 100	100	55
649 110 319 120	120	55
649 110 319 150	150	55
649 110 319 200	200	55

R+M Nr.	D	\varnothing
649 110 419 080	080	70
649 110 419 100	100	70
649 110 419 120	120	70
649 110 419 150	150	70
649 110 419 200	200	70
649 110 419 250	250	70

R+M Nr.	D	\varnothing
649 110 519 100	100	100
649 110 519 120	120	100
649 110 519 150	150	100
649 110 519 200	200	100
649 110 519 250	250	100
649 110 519 310	310	100

Egg-type Nozzles

Best performing and most durable design for higher efficiency. These are light and agile used as a great all around nozzle with replaceable inserts. They include a forward jet. The egg-type nozzle is wear resistant and cost competitive. Great for sanitary applications.

Threaded inserts can easily be serviced/replaced for longer life span. Material: Hardened stainless steel. Max. 500 bar / 150 °C



1/4" F. 6x 75° +1x 0°. 20-50 l/min. For $\text{R} \text{ } \varnothing$ 50-100 mm. Outside \varnothing 30 mm. g 127 g.



3/8" F. 6x 75° +1x 0°. 25-70 l/min. For $\text{R} \text{ } \varnothing$ 75-150 mm. Outside \varnothing 35 mm. g 207 g.



1/2" F. 6x 75° +1x 0°. 30-100 l/min. For $\text{R} \text{ } \varnothing$ 100-200 mm. Outside \varnothing 40 mm. g 281 g.



3/4" F. 6x 75° +1x 0°. 30-100 l/min. For $\text{R} \text{ } \varnothing$ 120-250 mm. Outside \varnothing 50 mm. g 567 g.



1" F. 8x 75° +1x 0°. 100-250 l/min. For $\text{R} \text{ } \varnothing$ 150-300 mm. Outside \varnothing 62 mm. g 1,265 g.

R+M Nr.	D	\varnothing
649 120 216 065	065	40
649 120 216 080	080	40
649 120 216 100	100	40
649 120 216 120	120	40
649 120 216 150	150	40
649 120 216 200	200	40

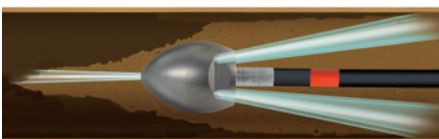
R+M Nr.	D	\varnothing
649 120 316 065	065	50
649 120 316 080	080	50
649 120 316 100	100	50
649 120 316 120	120	50
649 120 316 150	150	50
649 120 316 200	200	50

R+M Nr.	D	\varnothing
649 120 416 080	080	55
649 120 416 100	100	55
649 120 416 120	120	55
649 120 416 150	150	55
649 120 416 200	200	55
649 120 416 250	250	55

R+M Nr.	D	\varnothing
649 120 516 100	100	70
649 120 516 120	120	70
649 120 516 150	150	70
649 120 516 200	200	70
649 120 516 250	250	70
649 120 516 315	315	70

R+M Nr.	D	\varnothing
649 120 618 100	100	100
649 120 618 120	120	100
649 120 618 150	150	100
649 120 618 210	210	100
649 120 618 260	260	100
649 120 618 320	320	100

Functional principle



Everything for sewer cleaning applications

Milling Type Nozzles ST-49

With its 3 to 4 very strong concentrated forward jets and the sharp cutting edges the milling type nozzles will tear through almost any kind of blockage. The sharp edges cut, break and penetrate through every kind of blockage. Made out of wear-resistant, hardened stainless steel.

All nozzles are equipped with replaceable hardened stainless steel rear and

centric front jets. Due to this feature the efficiency is considerably higher compared to those nozzles with drilled holes and the service life is several times longer.

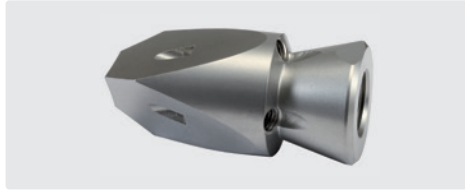
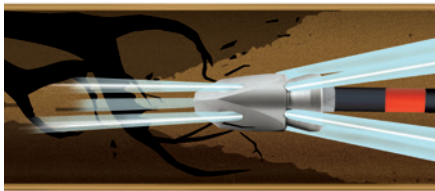
Max. 300 bar

Applications:

- » Penetration of completely clogged pipes
- » Opening of root masses
- » Opening of frozen pipelines
- » Hydraulic thrust boring flushing operations



Functional principle



300 bar. 1/4" F. \square 50 mm, \varnothing = 25 mm, \boxplus 0.13 kg.
For tubes > 30 mm.

Lateral front jets 0.5 mm drilled

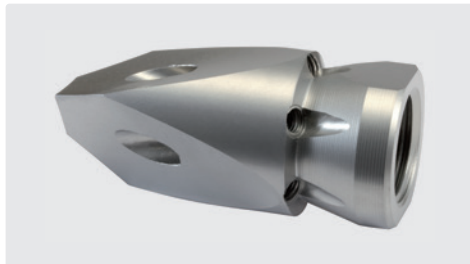


300 bar. 3/8" F. \square 55 mm, \varnothing = 28 mm, \boxplus 0.13 kg.
For tubes > 50 mm.

Lateral front jets with hardened stainless steel nozzle inserts

R+M Nr.	D	Front	\boxplus
649 010 234 045	045	3	4
649 010 234 050	050	3	4
649 010 234 055	055	3	4
649 010 244 060	060	4	4
649 010 244 070	070	4	4
649 010 244 080	080	4	4
649 010 244 085	085	4	4
649 010 244 100	100	4	4
649 010 244 120	120	4	4
649 010 244 150	150	4	4
649 010 244 200	200	4	4

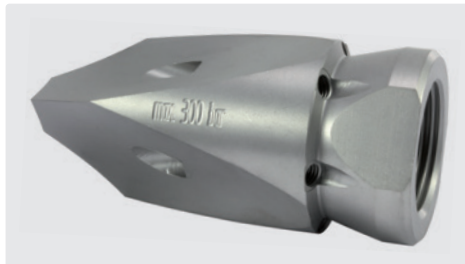
R+M Nr.	D	Front	\boxplus
649 010 336 055	055	3	6
649 010 346 070	070	4	6
649 010 346 080	080	4	6
649 010 346 100	100	4	6
649 010 346 120	120	4	6
649 010 346 150	150	4	6
649 010 346 200	200	4	6
649 010 346 250	250	4	6
649 010 346 270	270	4	6



300 bar. 1/2" F. \square 68 mm, \varnothing = 31 mm, \boxplus 0.17 kg.
For tubes > 60 mm.

Lateral front jets with hardened stainless steel nozzle inserts

R+M Nr.	D	Front	\boxplus
649 010 446 100	100	4	6
649 010 446 120	120	4	6
649 010 446 150	150	4	6
649 010 446 200	200	4	6
649 010 446 250	250	4	6
649 010 446 270	270	4	6
649 010 446 310	310	4	6
649 010 446 495	495	4	6
649 010 446 580	580	4	6



300 bar. 3/4" F. \square 80 mm, \varnothing = 38 mm, \boxplus 0.29 kg.
For tubes > 60 mm.

Lateral front jets with hardened stainless steel nozzle inserts

R+M Nr.	D	Front	\boxplus
649 010 546 120	120	4	6
649 010 546 150	150	4	6
649 010 546 180	180	4	6
649 010 546 200	200	4	6
649 010 546 250	250	4	6
649 010 546 270	270	4	6
649 010 546 310	310	4	6
649 010 546 450	450	4	6
649 010 546 495	495	4	6



300 bar. 1" F. \square 100 mm, \varnothing = 50 mm, \boxplus 0.64 kg.
For tubes > 100 mm.

Lateral front jets with hardened stainless steel nozzle inserts

R+M Nr.	D	Front	\boxplus
649 010 549 120	120	4	9
649 010 549 150	150	4	9
649 010 549 180	180	4	9
649 010 549 200	200	4	9
649 010 549 265	265	4	9
649 010 549 285	285	4	9
649 010 549 345	345	4	9
649 010 549 445	445	4	9
649 010 549 545	545	4	9

Symbols \square nozzle \ominus inlet \varnothing diameter \square length mm \boxplus weight \boxplus rear jets \square pipe

Everything for sewer cleaning applications

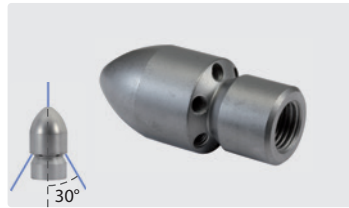
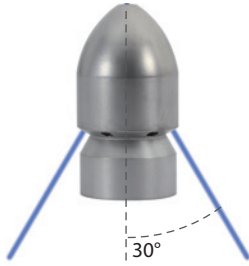
ST-49 Ball type nozzle, 30°

Made out of wear-resistant, hardened stainless steel provided with front jet insert or blind plug (interchangeable). Angle of jet is 30°, sturdy wall thickness, long service life and a minimum of wear and tear. All nozzles are provided with hardened stainless steel inserts. Due to this feature the

efficiency is considerably higher compared with those nozzles with drilled holes and the service life is several times longer. Max. 500 bar

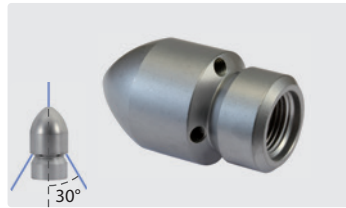
Applications:

- » Suitable for removal of sludge deposits
- » Desilting of pipes
- » Opening of frozen pipelines



1/4" F.
Outside \varnothing 25 mm.
rear jets, with front jet

R+M Nr.	D	⊗
649 030 216 060	060	6
649 030 216 080	080	6
649 030 216 100	100	6
649 030 216 120	120	6
649 030 216 150	150	6
649 030 216 200	200	6



3/8" F.
Outside \varnothing 30 mm.
rear jets, with front jet

R+M Nr.	D	⊗
649 030 314 060	060	4
649 030 314 080	080	4
649 030 314 100	100	4
649 030 314 120	120	4
649 030 314 150	150	4
649 030 314 200	200	4



3/8" F.
Outside \varnothing 30 mm.
rear jets, with front jet

R+M Nr.	D	⊗
649 030 316 060	060	6
649 030 316 080	080	6
649 030 316 100	100	6
649 030 316 120	120	6
649 030 316 150	150	6
649 030 316 200	200	6



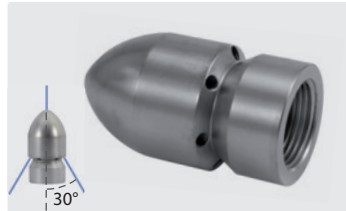
1/2" M. MR cone.
Outside \varnothing 30 mm.
rear jets, with front jet

R+M Nr.	D	⊗
649 040 416 060	060	6
649 040 416 080	080	6
649 040 416 100	100	6
649 040 416 120	120	6
649 040 416 150	150	6
649 040 416 200	200	6



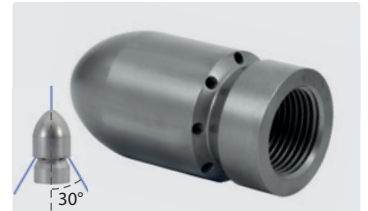
1/2" F.
Outside \varnothing 30 mm.
rear jets, with front jet

R+M Nr.	D	⊗
649 030 416 060	060	6
649 030 416 080	080	6
649 030 416 100	100	6
649 030 416 120	120	6
649 030 416 150	150	6
649 030 416 200	200	6
649 030 416 315	315	6



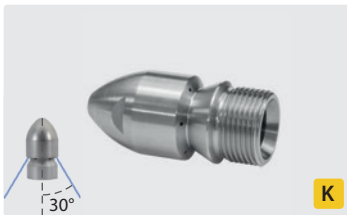
3/4" F.
Outside \varnothing 38 mm.
rear jets, with front jet

R+M Nr.	D	⊗
649 030 516 100	100	6
649 030 516 120	120	6
649 030 516 150	150	6
649 030 516 170	170	6
649 030 516 200	200	6
649 030 516 250	250	6



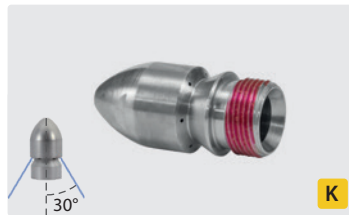
1" F.
Outside \varnothing 48 mm.
rear jets, with front jet

R+M Nr.	D	⊗
649 030 618 120	120	8
649 030 618 150	150	8
649 030 618 170	170	8
649 030 618 210	210	8
649 030 618 260	260	8
649 030 618 315	315	8
649 030 618 390	390	8



M22x1.5 M.
Outside \varnothing 25 mm.
rear jets

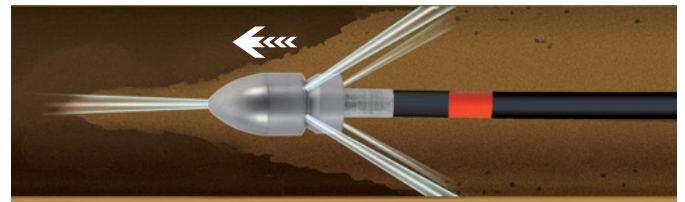
R+M Nr.	D	⊗
120 000 833*	090	6



TR22 M**.
Outside \varnothing 25 mm.
rear jets

R+M Nr.	D	⊗
120 000 832	090	6

Functional principle



Functional principle



** thread coated with microencapsulated thread locking fluid
* stainless steel

Everything for sewer cleaning applications

ST-49 Ball type nozzle, 20°

Made out of stainless steel provided with front jet insert or blind plug (interchangeable). Angle of jet is 20°, sturdy wall thickness, long service life and a minimum of wear and tear. All nozzles are provided with hardened stainless steel inserts. Due to this feature the efficiency is considerably

higher compared with those nozzles with drilled holes and the service life is several times longer.
Max. 500 bar

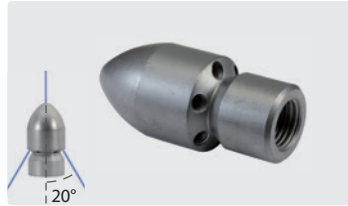
Applications:

- » Suitable for removal of sludge deposits
- » Desilting of pipes
- » Opening of frozen pipelines



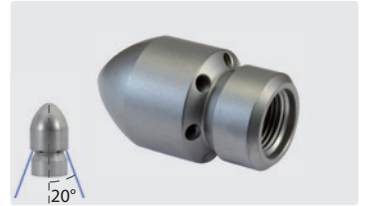
1/4" F.
Outside \varnothing 25 mm.
rear jets

R+M Nr.	D	rear jets
649 090 206 060	060	6
649 090 206 080	080	6
649 090 206 100	105	6
649 090 206 120	120	6
649 090 206 160	160	6
649 090 206 200	200	6



1/4" F.
Outside \varnothing 25 mm.
rear jets, with front jet

R+M Nr.	D	rear jets
649 090 216 060	060	6
649 090 216 080	080	6
649 090 216 100	100	6
649 090 216 120	120	6
649 090 216 150	150	6
649 090 216 200	200	6



3/8" F.
Outside \varnothing 30 mm.
rear jets

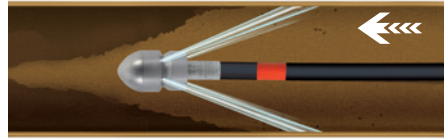
R+M Nr.	D	rear jets
649 090 306 060	060	6
649 090 306 080	080	6
649 090 306 100	105	6
649 090 306 120	120	6
649 090 306 160	160	6
649 090 306 200	200	6



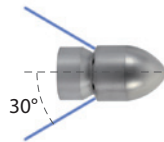
3/8" F.
Outside \varnothing 30 mm.
rear jets, with front jet

R+M Nr.	D	rear jets
649 090 316 060	060	6
649 090 316 080	080	6
649 090 316 100	100	6
649 090 316 120	120	6
649 090 316 150	150	6
649 090 316 200	200	6

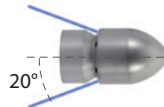
Functional principle



Jet angle INFO



30° = more efficient wall cleaning



20° = better traction

Symbols \varnothing nozzle \varnothing diameter rear jets

Everything for sewer cleaning applications

ST-49.2 Rotating nozzles

Stainless steel. Brazen rotating body. Excellent cleaning by rotating nozzle jets. Exchangeable inserts included.

Excellent pulling power by min. 4 rear jets specially placed. Pressure max. 350 bar.



1/4" F. rear jets. 3 side jets.
Outside \varnothing 30 mm.
317 g.

R+M Nr.	D	rear jets	side jets	length
649 050 234 060	060	4	69 mm	
649 050 234 080	080	4	69 mm	
649 050 234 105	105	4	69 mm	
649 050 234 130	130	4	69 mm	
649 050 234 150	150	4	69 mm	
649 050 234 200	200	4	69 mm	



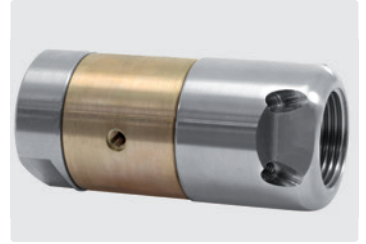
3/8" F. rear jets. 3 side jets.
Outside \varnothing 30 mm.
307 g.

R+M Nr.	D	rear jets	side jets	length
649 050 334 080	080	4	69 mm	
649 050 334 105	105	4	69 mm	
649 050 334 130	130	4	69 mm	
649 050 334 150	150	4	69 mm	
649 050 334 200	200	4	69 mm	
649 050 334 250	250	4	69 mm	



1/2" F. rear jets. 3 side jets.
Outside \varnothing 38 mm.
585 g.

R+M Nr.	D	rear jets	side jets	length
649 050 435 100	100	5	84 mm	
649 050 435 120	120	5	84 mm	
649 050 435 150	150	5	84 mm	
649 050 435 200	200	5	84 mm	
649 050 435 250	250	5	84 mm	
649 050 435 300	300	5	84 mm	



3/4" F. rear jets. 3 side jets.
Outside \varnothing 38 mm.
554 g.

R+M Nr.	D	rear jets	side jets	length
649 050 536 130	130	6	84 mm	
649 050 536 150	150	6	84 mm	
649 050 536 200	200	6	84 mm	
649 050 536 250	250	6	84 mm	
649 050 536 300	300	6	84 mm	
649 050 536 375	375	6	84 mm	

ST-49.2 VIBRA Rotating nozzles

Stainless steel. Brazen rotating body. Excellent cleaning by rotating nozzle jets and vibration for the reduction of the friction between hose and pipe wall. Exchangeable inserts included.

Excellent pulling power by min. 4 rear jets specially placed. Pressure max. 350 bar.



1/4" F. rear jets. 3 side jets.
Outside \varnothing 30 mm.
314 g.

R+M Nr.	D	rear jets	side jets	length
649 070 234 060	060	4	69 mm	
649 070 234 080	080	4	69 mm	
649 070 234 105	105	4	69 mm	
649 070 234 130	130	4	69 mm	
649 070 234 150	150	4	69 mm	
649 070 234 200	200	4	69 mm	



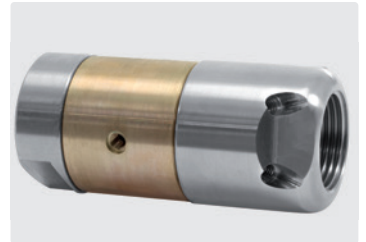
3/8" F. rear jets. 3 side jets.
Outside \varnothing 30 mm.
305 g.

R+M Nr.	D	rear jets	side jets	length
649 070 334 080	080	4	69 mm	
649 070 334 105	105	4	69 mm	
649 070 334 130	130	4	69 mm	
649 070 334 150	150	4	69 mm	
649 070 334 200	200	4	69 mm	
649 070 334 250	250	4	69 mm	



1/2" F. rear jets. 3 side jets.
Outside \varnothing 38 mm.
580 g.

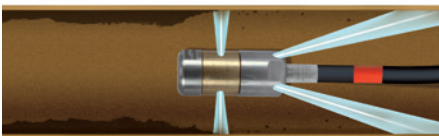
R+M Nr.	D	rear jets	side jets	length
649 070 435 100	100	5	84 mm	
649 070 435 130	130	5	84 mm	
649 070 435 150	150	5	84 mm	
649 070 435 200	200	5	84 mm	
649 070 435 250	250	5	84 mm	
649 070 435 300	300	5	84 mm	



3/4" F. rear jets. 3 side jets.
Outside \varnothing 38 mm.
550 g.

R+M Nr.	D	rear jets	side jets	length
649 070 536 130	130	6	84 mm	
649 070 536 150	150	6	84 mm	
649 070 536 200	200	6	84 mm	
649 070 536 250	250	6	84 mm	
649 070 536 300	300	6	84 mm	
649 070 536 375	375	6	84 mm	

Functional principle



Everything for sewer cleaning applications

Rotating nozzles with drivers

Rotor nozzle driver and rotor nozzles are the perfect combination for drilling through blockages with its rotary forward facing jet. Driven up to the blockage by 6 powerful rear facing hardened stainless steel nozzles the high speed forward facing spinning jet creates a cone shape that has

enough cutting force to blast through roots and scale. It is also ideal for cutting up and shredding tissue and fat deposits



ST-357.1. Max. 250 bar / 100 °C

R+M Nr.	D	G
649 140 216 065	065	1/4" F
649 140 216 085	085	1/4" F
649 140 216 095	095	1/4" F
649 140 216 110	110	1/4" F
649 140 216 120	120	1/4" F
649 140 216 130	130	1/4" F
649 140 216 140	140	1/4" F

R+M Nr.	D	G
649 140 316 100	100	3/8" F
649 140 316 135	135	3/8" F
649 140 316 145	145	3/8" F
649 140 316 160	160	3/8" F
649 140 316 180	180	3/8" F
649 140 316 200	200	3/8" F
649 140 316 235	235	3/8" F



ST-458.1. Max. 400 bar / 100 °C

R+M Nr.	D	G
649 160 316 125	125	3/8" F
649 160 316 145	145	3/8" F
649 160 316 160	160	3/8" F
649 160 316 180	180	3/8" F
649 160 316 200	200	3/8" F
649 160 316 235	235	3/8" F
649 160 316 250	250	3/8" F

R+M Nr.	D	G
649 160 416 150	150	1/2" F
649 160 416 170	170	1/2" F
649 160 416 195	195	1/2" F
649 160 416 215	215	1/2" F
649 160 416 240	240	1/2" F
649 160 416 275	275	1/2" F
649 160 416 300	300	1/2" F

Nozzle Inserts



Full jet. 500 bar.
Hex for allen key 2.5 mm.
Hardened stainless steel

R+M Nr.	TYP	hole-∅	nozzle size
040 075 000	M5	plug	-
040 075 005	M5	0.50 mm	0066
040 075 006	M5	0.60 mm	0085
040 075 007	M5	0.70 mm	0117
040 075 008	M5	0.75 mm	0133
040 075 009	M5	0.80 mm	0161
040 075 010	M5	1.00 mm	0237
040 075 012	M5	1.10 mm	0293
040 075 015	M5	1.30 mm	0458
040 075 020	M5	1.90 mm	0885

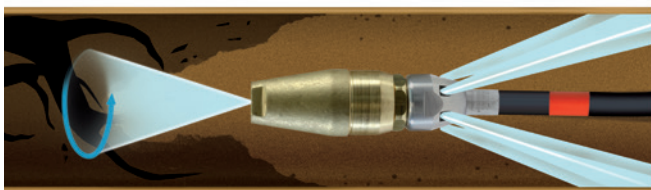
Driver for rotating nozzles



Hardened stainless steel. 6 M5 threads for nozzle inserts (see table below)

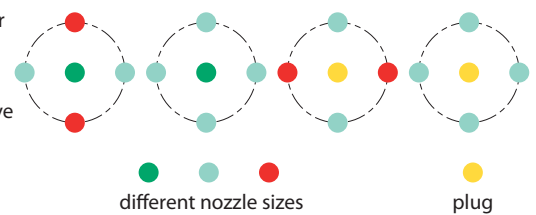
R+M Nr.	G	∅	for	P
040 075 200	1/4" F	1/4" M	ST-357/ST-456	350 bar
040 075 205	3/8" F	1/4" M	ST-357/ST-456	350 bar
040 075 210	3/8" F	1/4" M	ST-458/ST-559	500 bar
040 075 215	1/2" F	1/4" M	ST-458/ST-559	500 bar

Functional principle



Nozzle configuration

Nozzle inserts for sewer cleaning nozzles and nozzle driver have to be installed symmetrically.



Symbols \square nozzle \otimes diameter \triangle rear jets

Everything for sewer cleaning applications

Small plough jet nozzle

For 2 fan jets 1/4" M NPT



Fitted with two rear facing fan jets the small plough jet nozzle is great for desilting drains and sewers. The heavy forged brass construction keeps the jet firmly planted in the base of the pipe where the silt deposits collect and blasts them back towards the manhole.

Width approx. 72 mm. Weight 1.5 kg.

Max. 420 bar / 150° C / 80 l/min.

1/4"-nozzles need to be assembled under 45° to achieve best cleaning results. Select nozzle size according to pressure and flow rate of the machine.

R+M Nr.		
010 000 399	1/2" F	2 x 1/4" F NPT

For 2 ST-357 rotating nozzles



Fitted with two rear facing ST-357 rotating nozzles the small plough jet nozzle is the ideal solution for desilting drains and sewers.

The heavy forged brass construction keeps the jet firmly planted in the base of the pipe where the silt deposits collect and blasts them back towards the manhole.

Width approx. 88 mm. Weight 2.5 kg.

Max. 350 bar / 90° C / 80 l/min.

Select rotor nozzle size symmetric according to pressure and flow rate of the machine.

R+M Nr.		
200 049 410	3/8" F	2 x 1/4" M

Rotating nozzle adaptor

Designed for connecting the ST-357 rotating nozzle to a sewer cleaning hose. Hardened stainless steel body with extra sharp edges.

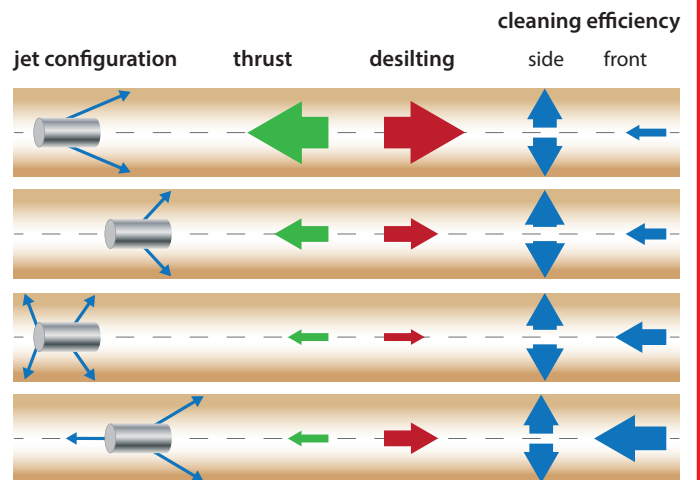
Max. 400 bar

For ST-357 rotating nozzle



R+M Nr.		
200 049 405	1/4" F	1/4" M

Possible jet configurations



Everything for sewer cleaning applications

Hydro-Excavation Nozzles

In all geological areas fast and effective:

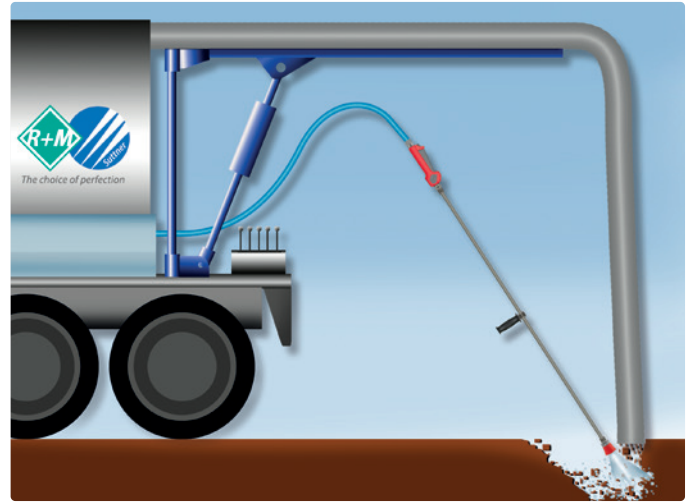
- » Areas difficult to access
- » Safe removal of contaminated material
- » 50 percent faster than usual digging by hand



Hardened stainless steel.
3 x lateral front jets 15 °and centric front jet.
Max. 500 bar /100 °C

R+M Nr.	⊕	D
649 130 413 060	1/2" F	060
649 130 413 090	1/2" F	090
649 130 413 120	1/2" F	120

Principle of operation HYDRO-Excavation Nozzle



Hydro-Excavation-Nozzle ST-458

Particularly durable, powerful and effective in all geological soil types:

- » Overmoulding of the rotor nozzle at the outlet with an extension to reduce contamination of the ceramic parts of the nozzle
- » For areas difficult to access

- » Safe removal of contaminated soil material
- » Max. 400 bar / 100° C

Repair Kit

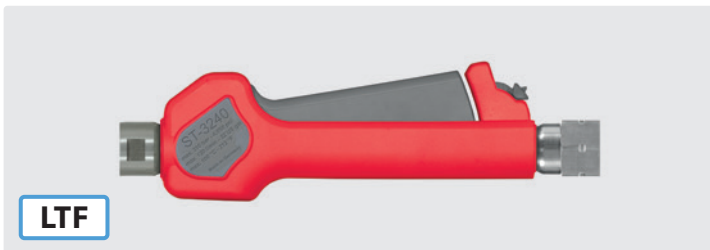


R+M Nr.	⊕	D
200 458 983	1/2" F	035
200 458 984	1/2" F	04
200 458 985	1/2" F	045
200 458 986	1/2" F	05
200 458 987	1/2" F	055
200 458 988	1/2" F	06
200 458 990	1/2" F	07
200 458 981	1/2" F	08
200 458 991	1/2" F	09
200 458 992	1/2" F	100

R+M Nr.	R+M Nr.
200 458 235	
200 458 240	
200 458 245	
200 458 250	
200 458 255	
200 458 260	
200 458 270	
200 458 280	
200 458 290	
200 458 210	
	200 458 190
	200 458 110

Suttner high pressure spray guns

ST-3240



LTF

Professional In-Line Spray Gun.
Stainless Steel.

Application e.g. municipal cleaning, hydro-excavation, agricultural industry.
Max. 310 bar / 120 l/min / 100 °C

R+M Nr.	⊕	⊖
203 240 500	1/2" F	1/2" F

Suttner ultra high pressure lances

Ultra high pressure lances ST-3600 - 600 bar



1/2" M. Lance with grip. Max. 600 bar / 150 °C

R+M Nr.	⊕	⊖	⊕	Ⓜ
203 600 416	1/2" M	1,500 mm	1/2" M	stainless steel
203 600 415	1/2" M	2,000 mm	1/2" M	stainless steel

Everything for sewer cleaning applications

Longcast lances

The longcast lance can be connected to a low pressure pump, to a high pressure pump, to the public water system or to the extinguishing water network.

The lance works in the medium pressure range. By means of its very good solidity, good handling and compactness the lance is especially suitable for the intensive use.

The lateral hand grip makes a stepless adjustment of the water jet during the operation possible. A long casting point jet or a progressive, conical spray jet can be set.

In order to realize ideal cleaning results the nozzle size needs to be adapted to the pump performance (pressure and flow rate).



1/2" F. Stainless steel. Longcast lance 350 mm with insulation ST-29 Cool & Compact 330 mm, gun ST-2320, grip aside and nozzle protector made out of plastic without nozzle.
Max. 150 bar / 80 l/min / 100 °C

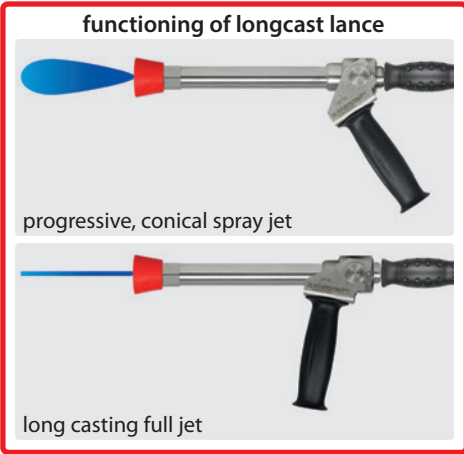
R+M Nr.		
200 078 520	nozzle protector without nozzle	1/2" F

Nozzles for longcast lances



M15x1 M. Stainless steel

R+M Nr.	D
200 078 412	1.2 mm
200 078 415	1.5 mm
200 078 418	1.8 mm
200 078 420	2.0 mm
200 078 423	2.3 mm
200 078 425	2.5 mm
200 078 430	3.0 mm
200 078 435	3.5 mm



ST-3500 High-Flow Pistole mit Langkegeldüse

Industrial high-flow gun ST-3500, lance 500 mm with side handle. Long Cast Nozzle.
Max. 350 bar / 200 l/min / 150 °C

Application:

- » Man hole cleaning
- » Paper Industry. Removal of snow balls during fibre jetting
- » Cleaning Tasks in Off-Shore or Marine Applications



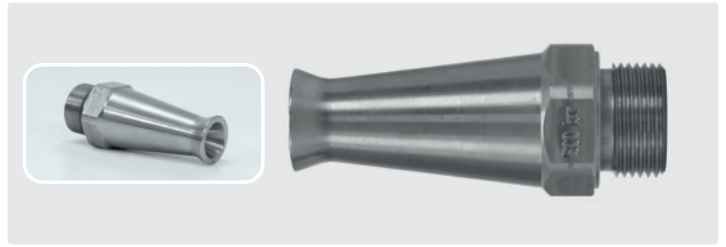
R+M Nr.		
203 500 560	750 mm	1/2" F swivel



Everything for sewer cleaning applications

Long Cast Nozzle

- » Stainless steel
- » Applications: cleaning of shafts
- » Extremely high impact force
- » Long reach
- » Nozzle protection
- » Max. 500 bar / 150 °C



R+M Nr.	⌀	⊕
040 001 963	5 mm	3/4" M

kommunal365+



Professional gun.
Max. 150 bar / 80 l/min / 150 °C

R+M Nr.	⊕	⊕
202 320 500	1/4" F	1/2" F



Professional gun.
Max. 150 bar / 80 l/min / 150 °C

R+M Nr.	⊕	⊕
202 320 510	1/2" F	1/2" F



Professional gun.
Max. 150 bar / 80 l/min / 150 °C

R+M Nr.	⊕	⊕
202 320 520	1/2" F	1/2" F swivel

ST-340 swivels



1/4" F : 1/2" F

R+M Nr.
200 340 520



Repair kit ST-340

R+M Nr.
200 340 100

Seal kits



R+M Nr.
202 320 495

Shoulder supports



New European Union guidelines imperatively prescribe the use of shoulder supports for cleaning applications exceeding an operating reaction force of 150 N.

R+M Nr.
202 705 590

Grips



Grip for lances with moulded handle

R+M Nr.
200 009 700



Grip for ST-85 Push & Pull lances

R+M Nr.
200 009 680

Protector ST-10



ST-10. 1/4" F.
Plastic.
Stainless steel

R+M Nr.
200 010 755

Symbols ⊕ outlet ⊕ inlet ⊕ height ⊕ nozzle ⊕ thread ⊕ DN nominal diameter

Everything for sewer cleaning applications

kommunal365+

ST-85 Push & Pull lances



Plug ST-3100. Lance stainless steel, vented handle ST-9 380 mm and nozzle protector ST-10 with nozzle. Variable adjustment of spraying angle from 20 to 140°. Especially designed for cleaning of places which are difficult to access. Max. 210 bar / 150 °C

R+M Nr.	ISO	⊖	⊕	Ⓢ
200 085 251		1/4" F NPT	600 mm	plug ST-3100
200 085 611		1/4" F NPT	850 mm	plug ST-3100
200 085 601		1/4" F NPT	1,000 mm	plug ST-3100
200 085 651		1/4" F NPT	1,500 mm	plug ST-3100

Lances



Plug ST-3100. Lance stainless steel, moulded handle 400 mm and nozzle protector ST-10 with nozzle. Max. 400 bar / 150 °C

R+M Nr.	ISO	⊖	⊕	Ⓢ
200 000 520	400 mm	1/4" F NPT	1,000 mm	plug ST-3100



Plug ST-3100. Lance stainless steel, moulded handle 300 mm, valve ST-54 aside and nozzle protector ST-10 with low pressure nozzle & thread 1/4" F. Max. 310 bar / 150 °C

R+M Nr.	ISO	⊖	⊕	Ⓢ
200 054 506	300 mm	1/4" F NPT	980 mm	plug ST-3100

Symbols ⊖ outlet ⊕ inlet ⊕ length ISO insulation

Everything for sewer cleaning applications

kommunal365+

Lances



Plug ST-3100. Lance stainless steel, moulded handle 400 mm and 1/4" M thread for rotating nozzles. Lance without rotating nozzle. Max. 400 bar / 150 °C

R+M Nr.	ISO	⊖	↔	⊕
200 000 521	400 mm	1/4" M	1,000 mm	plug ST-3100



Plug ST-3100. Lance stainless steel, moulded handle 300 mm, valve ST-53 on top, nozzle protector ST-10 with low pressure nozzle and 1/4" M thread for rotating nozzles. Lance without rotating nozzle. Max. 250 bar / 150 °C

R+M Nr.	ISO	⊖	↔	⊕
200 053 537	300 mm	1/4" M	980 mm	plug ST-3100

Suttner rotating nozzles ST-458.1 with ceramic insert

ST-458.1



1/4" F. Spray angle 20°. 120 - 250 bar. Max. 100 °C

R+M Nr.	D
200 458 811	11
200 458 812	12
200 458 815	15
200 458 820	20
200 458 825	25
200 458 830	30



Kit ST-458.1

R+M Nr.
200 458 311
200 458 312
200 458 315
200 458 320
200 458 325
200 458 330

ST-3500 high-flow spray guns



Professional high-flow gun. Stainless steel. Industrial high pressure cleaning and jetting gun for municipal cleaning and other industrial cleaning tasks. Valve piston hardened stainless steel. Max. 350 bar / 200 l/min / 150 °C

R+M Nr.	⊖	⊕
203 500 500	1/2" F	1/2" F



Professional high-flow gun. Stainless steel. Industrial high pressure cleaning and jetting gun for municipal cleaning and other industrial cleaning tasks. Valve piston hardened stainless steel. Swivel stainless steel. Max. 350 bar / 200 l/min / 150 °C

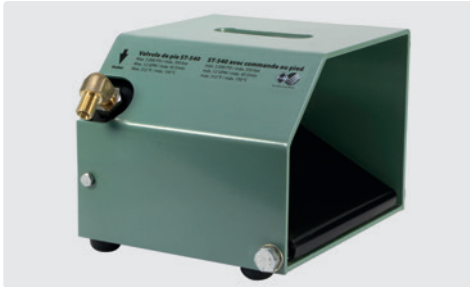
R+M Nr.	⊖	⊕
203 500 550	1/2" F	1/2" F swivel

Everything for sewer cleaning applications

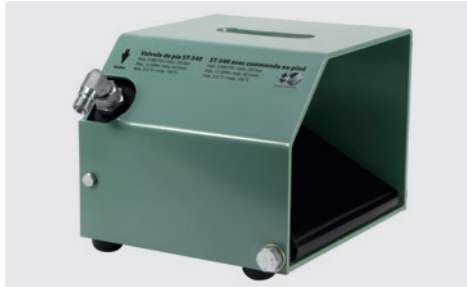
ST-540 foot valves

- » Safety and protection for works with high pressure. Ideal for sewer cleaning applications
- » available for applications with 350 bar or 500 bar in combination with the spray guns ST-2605 or ST-2750
- » flow of 45 l/min / 30 l/min
- » max. temperature 150 °C
- » control via integrated foot pedal

- » dimensions: H x W x D: 165 x 180 x 240 mm
- » slip-resistant rubber feet for a solid position
- » possible removal of the spray gun as well as easy installation by means of external connections



Incl. HP-gun ST-2605. Material housing powder-coated steel.
Rubber feet.
Max. 350 bar / 45 l/min / 150 °C



Incl. HP-gun ST-2750. Material housing powder-coated steel.
Rubber feet.
Max. 500 bar / 30 l/min / 150 °C

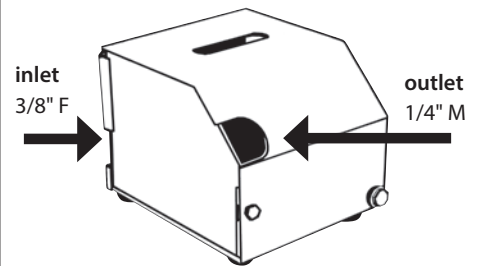


Incl. HP-gun ST-2750. Material housing powder-coated steel.
Rubber feet.
Max. 500 bar / 30 l/min / 150 °C

R+M Nr.		
200 540 500	1/4" M	3/8" F

R+M Nr.		
200 540 550	1/4" M	3/8" F

R+M Nr.		
200 540 560	M22 M	M22 M



Towing-Eye Kit ST-49



For M5 nozzle bodies

R+M Nr.	
200 049 015	0,5

Sting extension



Hardened stainless steel.
For M5 nozzle bodies

R+M Nr.	
040 075 090	M5 M

Tip cleaner



High speed steel (HSS) with aluminium shaft.
 42 mm

R+M Nr.	
200 049 042	0.5



Everything for sewer cleaning applications

Mosmatic manhole cleaner

Manhole cleaner TXS-2f



Inlet 1/2" F. Max. 170 bar / 120 °C

R+M Nr.	Ø	⊘
108 810 33	300 mm	3.7 kg
108 810 43	400 mm	4.4 kg
108 810 53	500 mm	5.3 kg

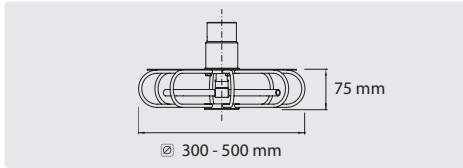
Mosmatic manhole cleaner TXS-2f with protective plate

Cleans ducts and manholes and realizes cleaning results like never before. The cleaner is self-rotating and very easy in its handling. By means of a protective plate the manhole cleaner and the user profit from extra protection.

Completely made of stainless steel.

Nozzles are excluded. 2 nozzles 1/8" M are required.

Further versions are available on request.



Coupling-system ST-245

Nipple ST-245



⊕ 1/4" M.
Stainless steel.
Max. 350 bar

R+M Nr.	⊖
040 005 447	27.5



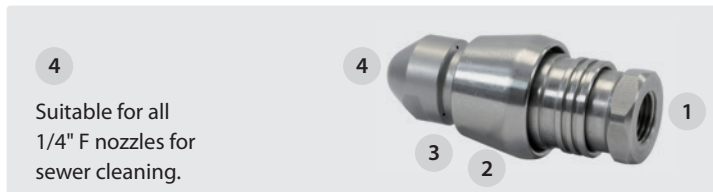
⊕ 1/4" M.
Stainless steel.
Max. 350 bar

R+M Nr.	⊖
040 005 446	33.5



⊕ 1/4" M. Stainless steel. Max. 350 bar. For wear cone

R+M Nr.	⊖
040 005 445	3



4

Suitable for all 1/4" F nozzles for sewer cleaning.

4

3

2

1

ST-245 Coupling / wear cone ST-245



R+M Nr.	⊖	⊕
200 245 500	1	1/4" F



R+M Nr.	⊖	⊕
200 245 510	1	3/8" M



Stainless steel.
For 040 005 445

R+M Nr.	⊖
040 005 431	2



POM. Red.
For 040 005 445

R+M Nr.	⊖
020 005 432	2



POM. Black.
For 040 005 445

R+M Nr.	⊖
020 005 431	2

Suttner high pressure quick couplings ST-3100

Couplings and plug ST-3100



Coupling : F.
Stainless steel.
Max. 250 bar / 150 °C



Coupling : M.
Stainless steel. 60° cone.
Max. 250 bar / 150 °C



Plug : F. Stainless steel.
Max. 250 bar / 150 °C



Plug : M.
Stainless steel. 60° cone.
Max. 250 bar / 150 °C

⊖	DN
1/4"	10
3/8"	12
1/2"	12

R+M Nr.	⊖
203 100 466	44 mm
203 100 461	44 mm
203 100 460	44 mm

R+M Nr.	⊖
203 100 653	47 mm
203 100 474	50 mm
203 100 655	45 mm

R+M Nr.	⊖
040 005 665	35 mm
040 005 667	41 mm
040 005 661	47 mm

R+M Nr.	⊖
040 005 668	47 mm
040 005 662	47 mm

Everything for sewer cleaning applications

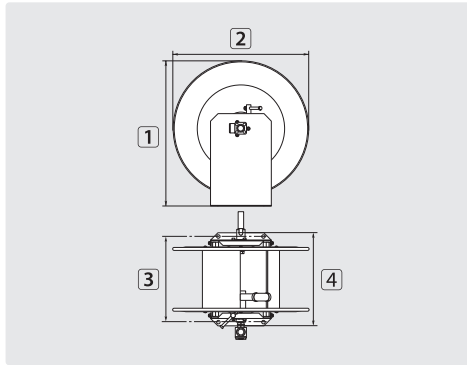
High pressure hose reels

STKI

The STKI series suitable for applications in craft and industry:

- » The base frame is made out of canted steel sheet profiles which stand for excellent stability.
- » The drum rotates by means of an adjustable handwheel being equipped with a free-wheel polyamide grip.
- » By means of a mechanical brake integrated in the bearing the drum can be slowly decelerated or even totally blocked.

- » Suitable for the mediums water or water with cleaning detergent, air, oils and greases.
- » The hose reels are all equipped with a swivel ST-322. The swivels ST-322 are completely made out of stainless steel and have a slide ring as sealing element.



TYP	outer Ø = hose
01	22.0 mm = 35 m
02	22.0 mm = 70 m
03	22.0 mm = 100 m
04	22.0 mm = 115 m
05	28.0 mm = 20 m
06	28.0 mm = 40 m
07	28.0 mm = 60 m
08	28.0 mm = 70 m
09	28.0 mm = 80 m
10	35.0 mm = 61 m

Stainless steel V2A / AISI 304

R+M Nr.	⊕	⊖	DN	P	°C	⊞	1	2	3	4	TYP
739 50	1/2" F	1/2" F	10	100-300 bar	90 °C	10.5 kg	515 mm	465 mm	280 mm	312 mm	01
739 60	1/2" F	1/2" F	10	100-300 bar	90 °C	13.5 kg	515 mm	465 mm	480 mm	512 mm	02
739 65	1/2" F	1/2" F	10	100-300 bar	90 °C	15.7 kg	515 mm	465 mm	680 mm	712 mm	03
739 701 2	1/2" F	1/2" F	10	100-300 bar	90 °C	16.8 kg	515 mm	465 mm	780 mm	812 mm	04
739 501 9	3/4" F	3/4" F	19	200 bar	90 °C	11.7 kg	515 mm	465 mm	280 mm	312 mm	05
739 601 9	3/4" F	3/4" F	19	200 bar	90 °C	14.7 kg	515 mm	465 mm	480 mm	512 mm	06
739 651 9	3/4" F	3/4" F	19	200 bar	90 °C	16.9 kg	515 mm	465 mm	680 mm	712 mm	07
739 70	3/4" F	3/4" F	19	200 bar	90 °C	18.0 kg	515 mm	465 mm	780 mm	812 mm	08
739 801 9	3/4" F	3/4" F	19	200 bar	90 °C	19.1 kg	515 mm	465 mm	880 mm	912 mm	09
739 702 4	1" F	1" F	24	100 bar	90 °C	18.3 kg	515 mm	465 mm	780 mm	812 mm	10

Accessories for hose reels

Elbow swivels



3/8" F : 3/8" M. DN 10.
Max. 30 r.p.m. / 90 °C

R+M Nr.	P	I
200 322 501	5-100 bar	65 mm
200 322 500	100-400 bar	65 mm



1/2" F : 3/8" M. DN 10.
Max. 30 r.p.m. / 90 °C

R+M Nr.	P	I
200 322 511	5-100 bar	65 mm
200 322 510	100-300 bar	65 mm



1/2" F : 1/2" M. DN 12.
Max. 30 r.p.m. / 90 °C

R+M Nr.	P	I
200 322 521	5-100 bar	67 mm
200 322 520	100-300 bar	67 mm



1/2" F : 1/2" M. DN 12.
Max. 30 r.p.m. / 90 °C

R+M Nr.	P	I
200 322 522	100-300 bar	68 mm

ST / SoST



Swivel 200 bar



Repair kit swivel 750 400 1

R+M Nr.	⊙
750 400 1	3/4"

R+M Nr.	TYP
750 400 2	3/4"

Symbols ⊕ inlet ⊖ outlet DN nominal diameter P pressure I height ↔ length ⊞ weight ⊙ thread TYP type shipment by truck V voltage

Everything for sewer cleaning applications

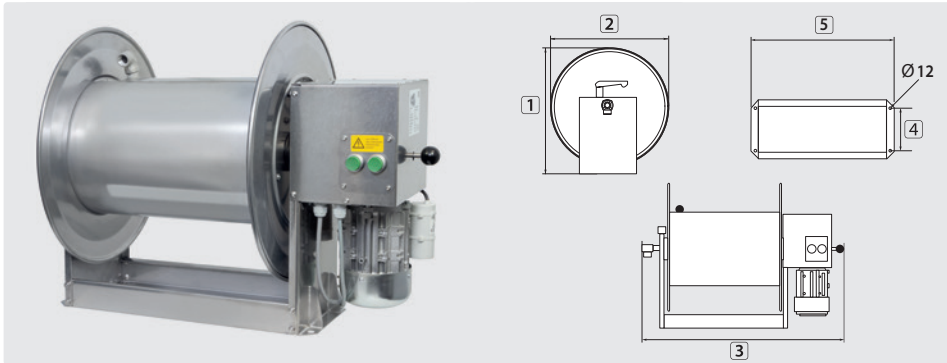
High pressure hose reels with electric drive

new

STKI with electric drive

The STKI series suitable for applications in craft and industry:

- » The base frame is made out of canted steel sheet profiles which stand for excellent stability.
- » For horizontal winding above ground.
- » The drum has an almost closed sheet steel hub and runs in maintenance-free plastic bearings.
- » Easy to use thanks to electric drive and remote control.
- » Drum can be separated from the drive thanks to the sliding clutch.
- » Right/left rotation can be controlled via buttons.
- » Suitable for the mediums water or water with cleaning detergent, air, oils and greases.
- » The hose reels are all equipped with a swivel ST-322. The swivels ST-322 are completely made out of stainless steel and have a slide ring as sealing element.



TYP	outer \varnothing = hose \leftrightarrow
01	17.0 mm = 125 m
02	17.0 mm = 150 m
03	17.0 mm = 185 m
01	22.0 mm = 70 m
02	22.0 mm = 85 m
03	22.0 mm = 100 m

Stainless steel V2A / AISI 304. With 230 V / 24 V / 12 V, 50 Hz worm gear motor, 0.22 kW with manual claw clutch

R+M Nr.	G & ⊖	V	DN	P	°C	g	1	2	3	4	5	TYP
739 602 30	1/2" F	230 V / AC	12	100-300 bar	90 °C	24 kg	515 mm	460 mm	730 mm	153 mm	480 mm	01
739 602 302	1/2" F	230 V / AC	12	100-300 bar	90 °C	25 kg	515 mm	460 mm	830 mm	153 mm	580 mm	02
739 602 303	1/2" F	230 V / AC	12	100-300 bar	90 °C	26 kg	515 mm	460 mm	930 mm	153 mm	680 mm	03
739 600 240	1/2" F	24 V / DC	12	100-300 bar	90 °C	24 kg	515 mm	460 mm	730 mm	153 mm	480 mm	01
739 600 241	1/2" F	24 V / DC	12	100-300 bar	90 °C	25 kg	515 mm	460 mm	830 mm	153 mm	580 mm	02
739 600 242	1/2" F	24 V / DC	12	100-300 bar	90 °C	26 kg	515 mm	460 mm	930 mm	153 mm	680 mm	03
739 600 120	1/2" F	12 V / DC	12	100-300 bar	90 °C	24 kg	515 mm	460 mm	730 mm	153 mm	480 mm	01
739 600 121	1/2" F	12 V / DC	12	100-300 bar	90 °C	25 kg	515 mm	460 mm	830 mm	153 mm	580 mm	02
739 602 122	1/2" F	12 V / DC	12	100-300 bar	90 °C	26 kg	515 mm	460 mm	930 mm	153 mm	680 mm	03

Accessories STKI with electric drive

Swivel ST-322



1/2" F : 1/2" M. DN 12.
 [P] 100-300 bar.
 Max. 30 r.p.m. / 90 °C

R+M Nr.	i
200 322 520	67 mm



Repair kit swivel
 ST-322

R+M Nr.
200 322 490



Radio remote control retrofit kit.
 868.3 MHz hand transmitter, receiver and rod antenna

R+M Nr.
739 704 013

R+M service

In case of an order for hose reels and hose please be informed that we are willingly prepared to directly mount the assembled hose on your desired hose reel.

For this purpose you only have to state the R+M Nr. 740 00 on your order.

It's definitely worth booking this service!

Should you require more information about our offer, do not hesitate to contact us at any time!

We are looking forward to receiving your order.

R+M Nr.
740 00



Hose reel trolley

- » Stainless steel - trolley for mounting hose reels
- » Manoeuvrable and easy to handle such as a sack truck
- » Ergonomic plastic handle strip which is easily unscrewable for the food industry

- » One lance holder on each side, diameter: 37 mm
- » Suitable for the hose reels ST-71 (200 071 705), STKI 20 and STKI 40 (739 50, 739 601 9, 739 60, 739 501 9, 739 601 9)



Trolley with two big wheels. Ø 260 mm. H x W x D: 1,210 x 715 x 560 mm

R+M Nr.

712 000 078



9.0 kg



Trolley with two grey and non-fading wheels. H x W x D: 1,175 x 700 x 650 mm

R+M Nr.

712 000 070



7.9 kg

- » **Extension plate made of stainless steel**
- » Easy installation for 712 000 070
- » Including fastening material
- » 4 vibration dampers made of stainless steel and elastic natural rubber 55 °. Rubber buffer type A. M10 x 28. Spring stiffness: 500 N / mm. Load: 2,000 N
- » For large hose reels: 739 65; 739 651 9 and 739 602 0

Extension plate, optional



R+M Nr.

105 000 103

easyprotect365+ protection for high pressure cleaning

easyprotect365+ professional protective clothing for abrasive blasting operations up to 500 bar / 7,500 psi.

The strongest fiber in the world for the toughest demands of the world. Thanks Dyneema any application grown to safely master the most difficult tasks.

The perfect protection for people who work professionally with high-pressure cleaner not only in the industry.

Comfort, function and safety

Until now there has been no adequate protection for high pressure cleaning.

Nothing that corresponded to the achievements of modern devices or user requirements on comfort and functionality. Our experience with water blasting work at high pressures (up to 500 bar / 7,500 psi) and other personal protective equipment are the basis for our new clothing range. easyprotect365+ protection for high pressure cleaning. Ideal protection for abrasive blasting of concrete rehabilitation works, shipyards, petrochemical and steel industry.

Face shields

Flip-up face shields



- » Anti-fog, scratch-proof and antistatic polycarbonate lens
- » Adjustable headgear
- » 100 % UV-protection
- » Protected against shock, splinters, solid particle and chemical danger (dangerous drops)
- » Weight 200 g

R+M Nr.

956 003 487

easyprotect365+®

Apron



- » 3-layer apron with CE certification
- » Security for blasting work up to 500 bar
- » Ideal for work in warm environments
- » Adjustable carrying band, waist band
- » Easy to put on and waterproof
- » Weight 0.7 kg
- » One Size
- » Protection class 5/5/2

R+M Nr.

956 123 501

Special gloves



- » Special gloves with CE certification
- » Security for blasting work up to 500 bar
- » Sand-rubber coating for maximum grip
- » Extra inner glove made of nylon
- » Protection class 5 cut 4 abrasion, tear and cut resistance
- » In two sizes 8 / 11
- » Protection class 5/5/2

R+M Nr.

956 100 501*
956 100 502

size

8
11

Protection class 5/5/2

- rotating nozzle 500 bar/7,500 psi
- flat jet 500 bar/7,500 psi
- point jet 200 bar/3,000 psi

CE 89/686/EEC

* limited stock



The choice of perfection

