

ST-550 Air, pneumatically operated 2/2 valve



The choice of perfection

For use in Control Systems:
Control of large pressures and water volumes in industrial cleaning systems such as vehicle washing, tank cleaning or, for example, in crate washing systems.

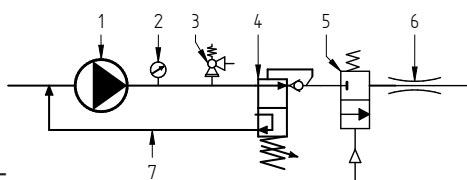
ST-550 is a pneumatically operated 2/2 valve. It can be used as a remote spray gun.



Connections: Compressed air supply on top, inlet and outlet 3/8" on the side.

Pneumatically operated open/close control valve made of brass/stainless steel

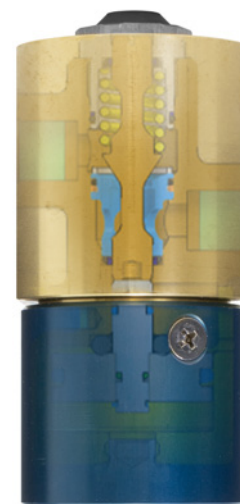
- Pressure max. 350 bar
- Flow 80 l/min.
- Temperature max. 80° C
- Seal made of high quality PTFE, piston stainless steel
- Brass body
- In-/Outlet connections: 3/8" F
- Air pressure 6 bar, air feed hole 1/4" F
- A 3/2 way pneumatic valve is required for the control.



1. High-pressure generator
2. Pressure gauge
3. Safety valve
4. Unloader valve
5. ST-550-valve
6. Nozzle
7. Return line



Function: The pneumatically operated valve opens and closes a high pressure line by means of a piston acting on a seat. The valve is opened by means of a pneumatic piston, which releases the sealing seat by pressing on the valve piston. The reset is spring-loaded. If the compressed air supply is interrupted, the valve closes automatically and the fluid flow is also interrupted.



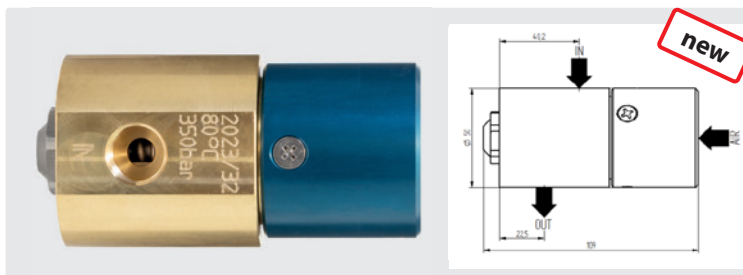
A 3/2 way pneumatic valve is required for the control.

Material: Brass body and internal parts in stainless steel. Pneumatic jack in anodized aluminium.



Technical data

Max. Temperature	80° C
Max. Pressure	350 bar
Thread	3/8" F / Air 1/4" F
Material	Brass / Stainless steel
Piston / Seal	Stainless steel / PTFE



2/2 way pneumatic valve. Brass body. Piston stainless steel. For use in Control Systems with compressed air insert for valve actuation.

R+M Nr.	P	↔	⊕ Air	⊕	⊖	°C
200 550 700	350 bar	80 l/min.	1/4" F	3/8" F	3/8" F	80° C