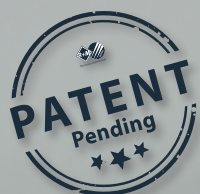


Suttner unloader valve ST-265 AIR pneumatically controlled



- ✓ With "pneumatic spring"
- ✓ Equipped with ball check valve
- ✓ Particularly compact design compared to the competition

Suttner unloader valve ST-265 AIR pneumatically controlled and permissible working pressure up to 350 bar

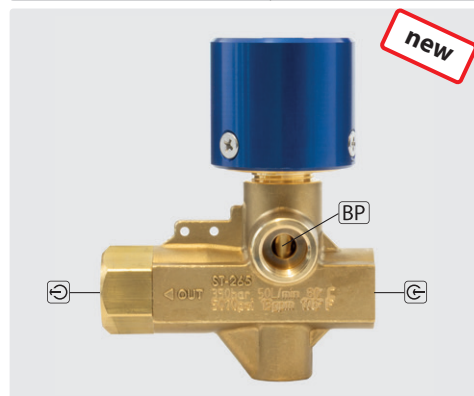
- Precise adjustment of the working pressure
- Soft switching behavior
- Particularly easy to maintain
- Low pressure drop
- High-quality brass/stainless steel combination
- The "pneumatic spring" does not generate an additional switching pressure peak
- Use e.g. in automated cleaning systems or car washes



Anodized cylinder housing for high corrosion protection and wear-resistant surface



ST-265 AIR pneumatically controlled



☐ = Inlet 3/8" F, ☐ = Outlet 3/8" F.
BP = Bypass 3/8" F. Ball check valve.
Max. 350 bar / 80 °C

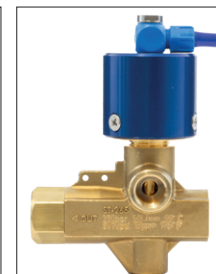
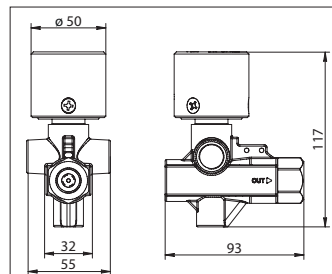
R+M Nr.	☐
200 265 560	50 l/min

Pressure regulator



1/4" F. 0.5 – 10 bar. 1/8" F pressure gauge. Connection for compressed air (ST-164 and ST-168)

R+M Nr.
150 008 010



Technical data

Max. pressure	350 bar
Max. temperature	80 °C
Inlet / Outlet	3/8" F / 3/8" F
Bypass	3/8" F
Flow	50 l/min
Pneumatic drive	max. 7,5 bar / Inlet 1/4" F