

easywash365+ mat cleaner, galvanized or powder-coated



The choice of perfection

Ideal for your car wash area

- Available in 5 colors
- Hot-dip galvanized and corrosion-resistant
- practical and robust



Available in galvanized or powder-coated!



The practical mat cleaner with grating and dust drawer

- Mat cleaner made of hot-dip galvanized steel, fastening parts made of stainless steel
- Sheet steel housing mounted vibration-proof and noise-reducing
- Including 4 fastening screws with universal dowels
- Many RAL tones possible, including DB 703 with a glimmer effect
- Collecting drawer with ABS recessed grip, secure locking and centering
- For easier emptying, the back of the drawer is designed as a chute and guide plates running all around guide the dirt straight into the drawer
- Appealing design
- Inexpensive delivery with UPS

H x W x D
920 x 630 x 350 mm.
Delivery includes fastening material

Professional quality made of galvanized steel

Unpainted: _____
Hot-dip galvanized grating, mesh 30/30

Drawer with ABS handle and body: _____
Many colors are possible



Many RAL colors are possible: Color number DB-703 is an anthracite-colored gray that contains a glimmer effect (effect pigment).

R+M Nr.	☐	M
105 740	25 kg	Hot-dip galvanized steel

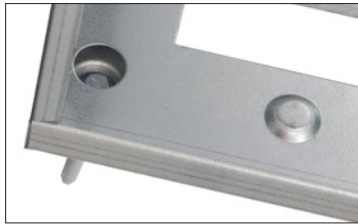
easywash365+

www.rm-suttner.com

easywash365+ mat cleaner, galvanized or powder-coated



The choice of perfection



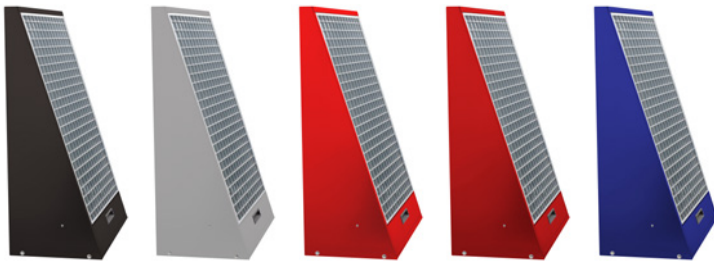
Easily fastened: Stainless steel screws with universal dowels are included in the scope of delivery.



Easy emptying: The sloping back of the drawer is designed as a chute.



Robust workmanship: Grid with 30 x 30 mm grid. Stainless steel screws securely hold the impact grate.



Mat cleaner, powder-coated. Including drawer with ABS recessed grip and fastening material

R+M Nr.	(B)	(M)
105 740 703	25 kg	galvanized / Iron glimmer gray
105 749 006	25 kg	galvanized / White aluminum
105 743 020	25 kg	galvanized / Traffic red
105 743 001	25 kg	galvanized / Signal red
105 745 002	25 kg	galvanized / Ultramarine blue



Clean and well thought out: All-round, sloping baffles inside the housing guide the dirt safely into the drawer.

