

PARTS BULLETIN

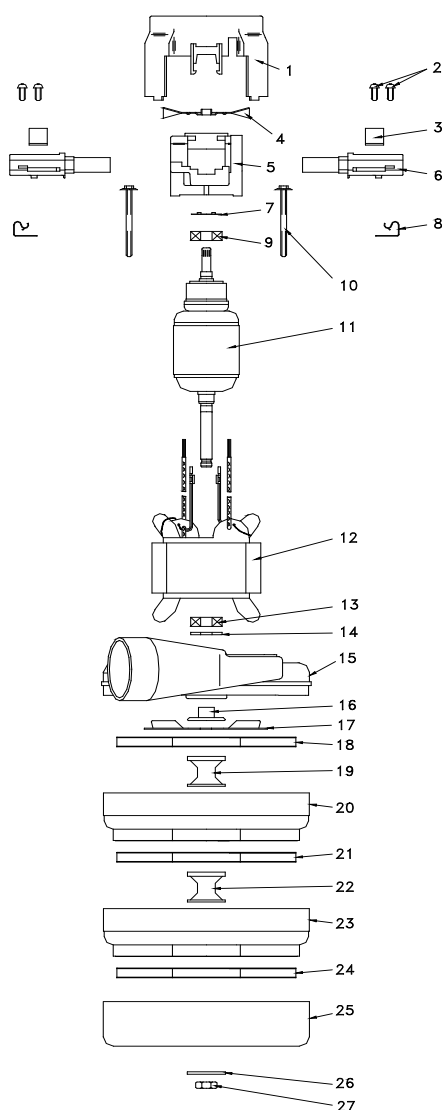
AMETEK
LAMB ELECTRIC DIVISION

MODEL NO.
116513-13

ISSUED: July 1993
REVISED: July 2001

5.7"/145mm DIAMETER, 36V, 3-STAGE, BY-PASS, BALL/BALL, TANGENTIAL DISCHARGE, AIR SEAL AND EPOXY

PARTS LIST



	<u>DESCRIPTION</u>	<u>REQUIRED</u>	<u>PART NO.</u>
1	HOUSING	1	60-3776-4
2	SCREW	4	50-7971
3	CLAMP	2	10-5477
4	FAN	1	0-3930-1
5	COMM END BRACKET	1	20-6581
6	BRUSH MECHANISM	2	33423-19
7	LOAD SPRING	1	10-3543
8	CLIP	2	20-5110
9	BALL BEARING	2	70-7613-2
10	SCREW	1	60-7952-6
11	ARMATURE	1	216513-01
12	FIELD	1	316406-00
13	BALL BEARING	1	70-7619-2
14	NEOPRENE WASHER	1	10-2481
15	FAN END BRACKET	1	30-6833
16	SPACER	1	40-2207
17	FAN	1	0-3939-1
18	ROTATING FAN	1	31120-4
19	SPACER	1	10-2977-1
20	STATIONARY FAN	1	31340
21	ROTATING FAN	1	31120
22	SPACER	1	30-2943
23	STATIONARY FAN	1	31373
24	ROTATING FAN	1	31120
25	FAN SHELL	1	30-3744-14
26	WASHER	1	30-2942
27	NUT	1	7491

PART SUBJECT TO CHANGE WITHOUT NOTICE.

*THIS INFORMATION IS FOR PART IDENTITY ONLY,
IT IS NOT TO BE USED AS DISASSEMBLY OR
ASSEMBLY INSTRUCTIONS.*

*REPLACEMENT OF ARMATURE OR FIELD REQUIRES
THE REPLACEMENT OF BRUSH MECHANISM.*