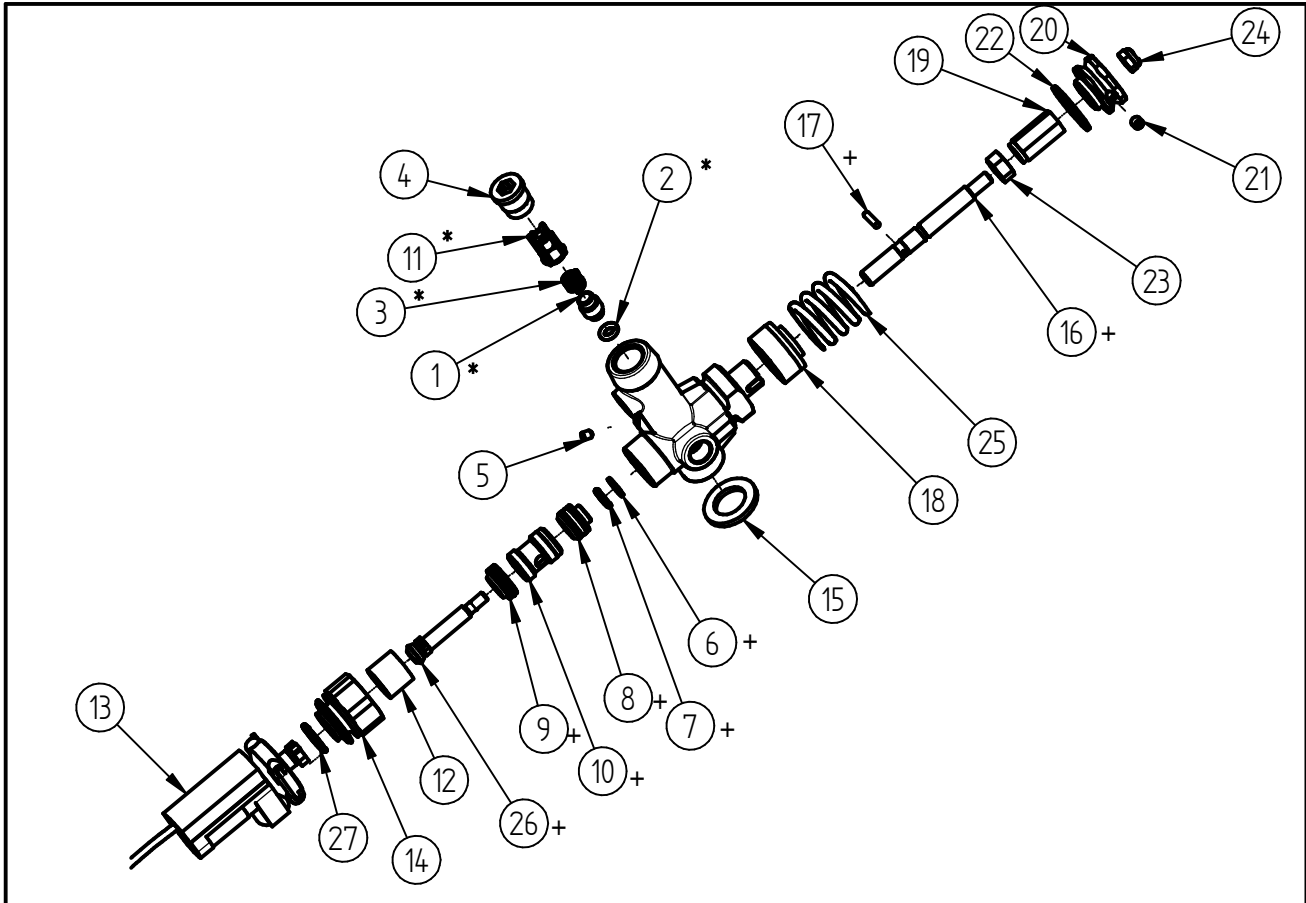


Spare Parts
Unloader ST- 261
 Item-No. 20 0261 660



Pos.	Item-No.	Description	Pos.	Item-No.	Description
1	04 0000 440	Valve part	16	04 0000 406	Pull rod
2	05 0000 051	O-Ring 5x2,5	17	04 0001 490	Cylinder pin
3	06 0000 310	Spring	18	02 0002 850	Bushing
4	01 0001 700	protection screw	19	01 0004 480	Adjusting nut
5	04 0001 270	Hex. socket head screw M4x5	20	10 0001 700	Adjusting nut
6	05 0000 390	Back ring	21	04 0001 630	Hex. socket head screw
7	05 0001 350	O-Ring 7,65x1,78	22	02 0001 341	Glide ring
8	20 0261 529	Section assamby piston	23	04 0001 610	Hex nut M8x1
9	20 0261 524	Section assamby seat	24	04 0001 621	Nut M6
10	01 0004 250	Restrictions part	25	06 0000 301	Spring
11	02 0001 290	Valce cage	26	20 0260 520	Section assamby close road
12	01 0001 790	Distance bushing	27	05 0000 503	O-Ring
13	20 0261 519	Switch ST-261			
14	04 0003 760	Cap nut			
15	04 0001 670	plate			

Repair-Kits

Pos.	Item-No.	Description	Pos.	Item-No.	Description
*	20 0261 528	Repair Kit "A"	+	20 0261 526	Repair- Kit ST- 261