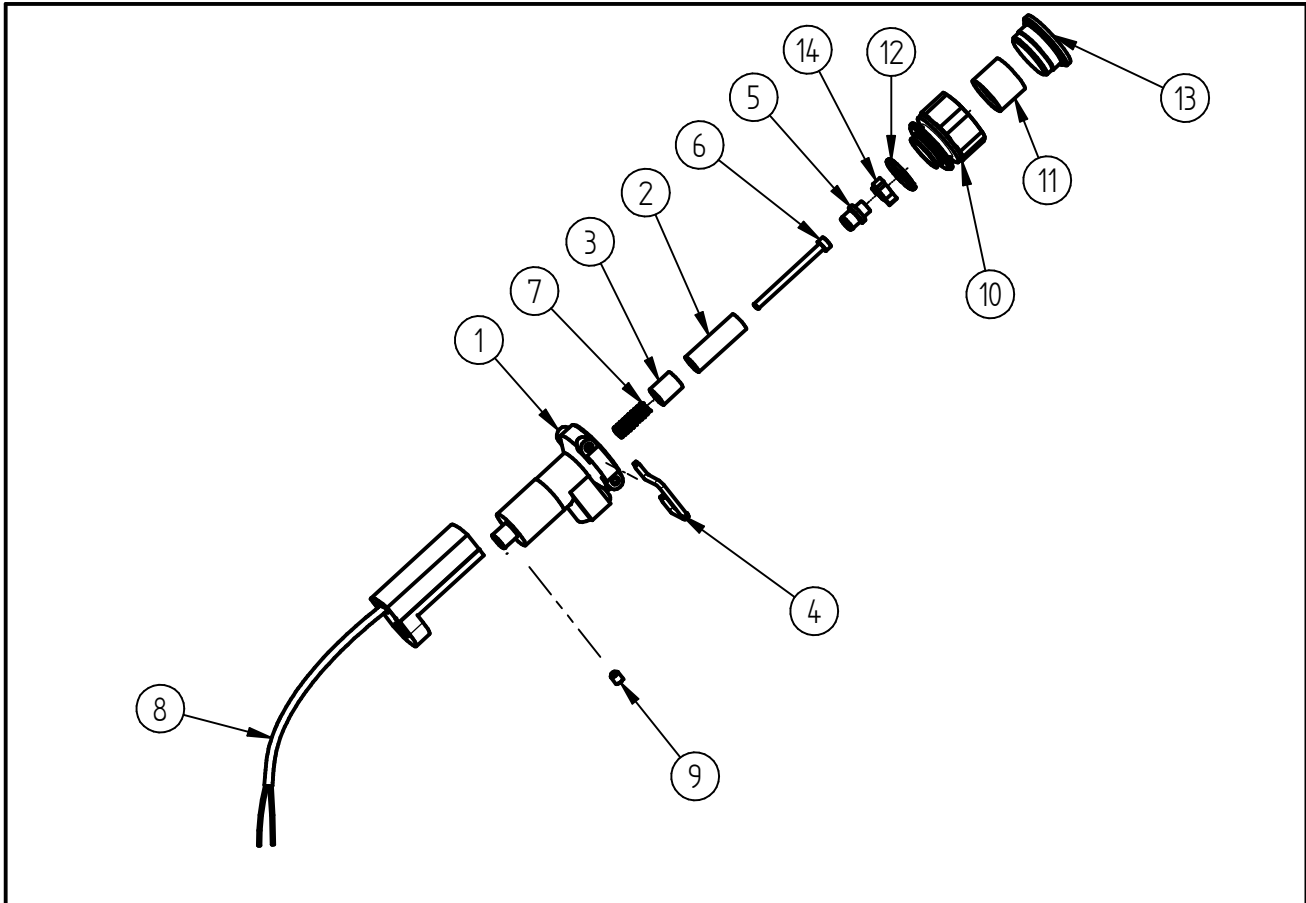


Spare Parts
Unloader ST-261
 Item-No. 200261517



| Pos. | Item-No. | Description |
|------|-----------|--------------------------------|
| 1 | 010000800 | Housing ST-261 reed switch |
| 2 | 010000810 | Guide bushing ST-261 |
| 3 | 090000015 | Magnet only float ST-6 |
| 4 | 060000385 | Clamp ST-261 |
| 5 | 040000621 | Pressure pad ST-261 switch |
| 6 | 040001010 | Screw M3x40 ISO 4762 A2 |
| 7 | 060000130 | Spring 0,8x5x17,5 |
| 8 | 200261480 | Subassembly Reed switch ST-261 |
| 9 | 040001270 | Hex. socket head screw M4x5 |
| 10 | 040003760 | Cap nut switch ST-261 |
| 11 | 010001791 | Distance bushing ST-261 |
| 12 | 050000503 | O-ring 14,1x1,6 |
| 13 | 020002190 | Plastic cap black |
| 14 | 020001471 | Lead part for switch ST-261 |

Repair-Kits

| Pos. | Item-No. | Description | Pos. | Item-No. | Description |
|------|----------|-------------|------|----------|-------------|
| . | | | | | |