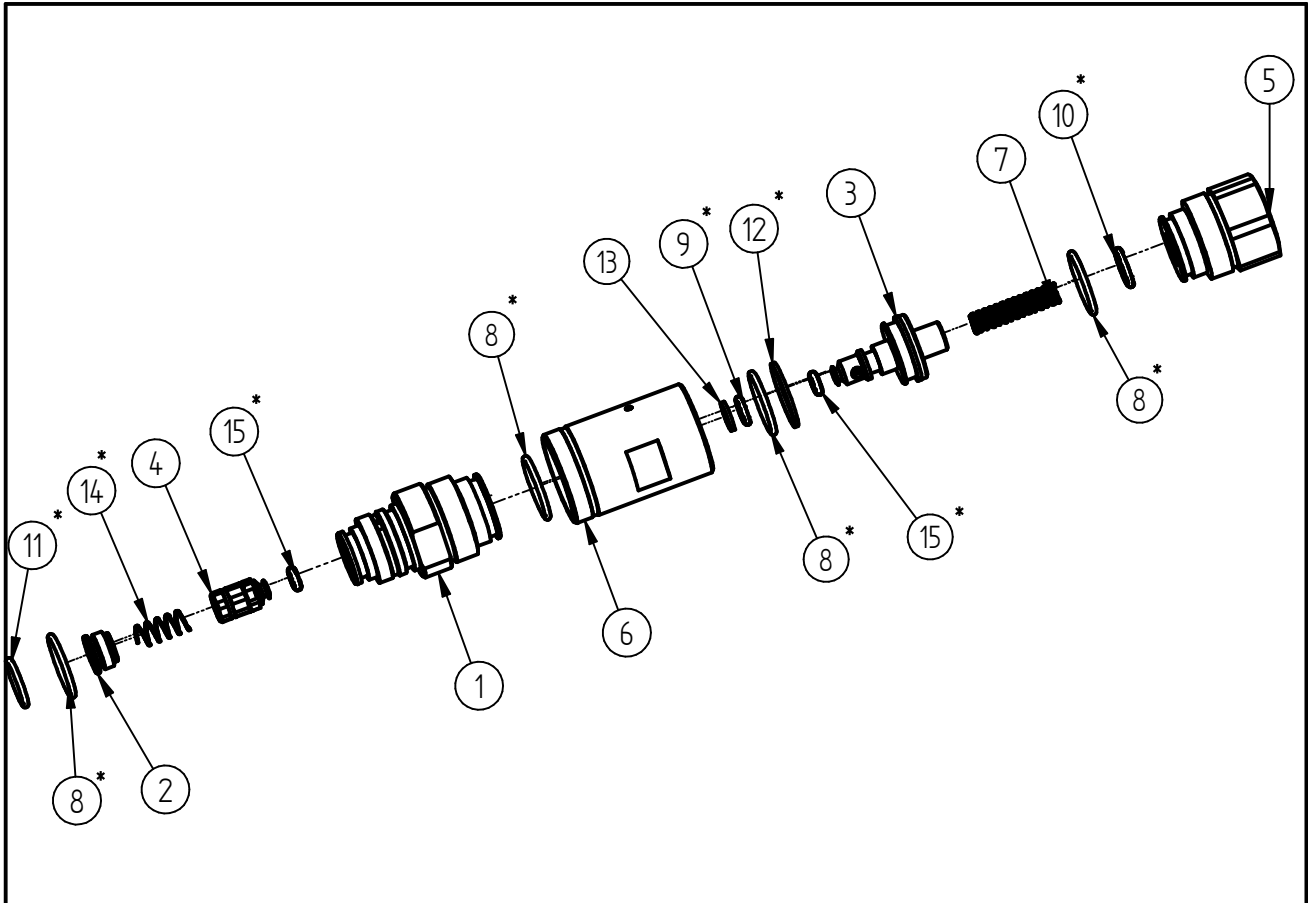


Spare Parts

Double injector ST-164

Item-No. 200164370



| Pos. | Item-No. | Description |
|------|-----------|------------------------------------|
| 1 | 040004852 | Connector air valve ST-164 |
| 2 | 040003558 | Screw plug ST-163 |
| 3 | 040004848 | Piston rod air valve ST-164 |
| 4 | 040003573 | Check valve piston ST-163 SS316L |
| 5 | 040004855 | Adapter air valve ST-164 |
| 6 | 040004850 | Sleeve air valve ST-164 |
| 7 | 060001120 | Air valve spring ST-164 |
| 8 | 050002480 | O-ring 15x1,5 EPDM 80 Shore |
| 9 | 050000780 | O-ring 5x1,5 EPDM 70 Shore |
| 10 | 050000465 | O-ring 8x1,5 EPDM 70 Shore |
| 11 | 050000021 | O-ring 11x1,5 EPDM 90 Shore |
| 12 | 050001415 | Back ring 18x1,1x1,0 |
| 13 | 050001418 | Back-up ring G 8,0x1,1x1 |
| 14 | 060001102 | Spring check valve |
| 15 | 050000264 | O-ring 2,9x1,78 FKM ETP-75 extreme |

Repair-Kits

| Pos. | Item-No. | Description | Pos. | Item-No. | Description |
|------|-----------|-----------------------------------|------|----------|-------------|
| * | 200164488 | Repair Kit ST-164 Luftsperrventil | | | |