

## Safety

### Hazard!



If these instructions are not complied with, there is a risk of life and limb and property damage!

Before using this device for the first time, read the present User Manual and comply with it. Keep the User Manual in a safe place for later reference or for the subsequent owner!



## Environmental Protection Disposal

The packaging material is recyclable. Please do not dispose of the packaging in the household waste but forward it to a recycling facility. Old devices contain valuable recycling materials which should be forwarded to a recycling facility. Therefore, please dispose of old devices via appropriate collection systems.



## Intended Use

Use this telescopic lance in connection with a high-pressure cleaner only

- to clean machines, vehicles, buildings, façades, etc. which are difficult to access using a high-pressure water jet.
- in the specified pressure and temperature range.
- with approved accessories and spare parts.



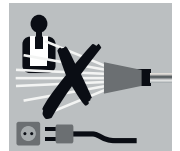
## General Safety Instructions

- Comply with the safety instructions of your high-pressure cleaner.
- in the specified pressure and temperature range.
- with approved accessories and spare parts.



## Hazard!

- High-pressure jets can be dangerous in case of improper use.
- The jet must not be pointed at people, animals, active electric equipment, or the device itself. Keep a safe distance from high-voltage lines.
- Do not point the jet at others or yourself to clean clothing or shoes.
- Do not hose down any objects containing substances hazardous to health (e.g. asbestos) or carrying current.
- Do not process any flammable, explosive, corrosive, or toxic operating supplies.
- When working with operating supplies with temperatures exceeding 40 °C, do not touch any uninsulated areas.
- Do not use the equipment if leakages are visible.
- Immediately shut down the equipment if malfunctions occur.
- Never block the pulled trigger of the gun or prevent it from closing in another way.
- Tyres of vehicles / valves of tyres can be damaged by the high-pressure jet or burst. A first sign of this is a discolouration of the tyre. Damaged tyres of vehicles / valves of tyres are dangerous to life. Keep a minimum jet distance of 30 cm when cleaning!
- Due to the water jet escaping at the high-pressure nozzle, a recoil force acts upon the manual spray gun. Therefore, use a strap during work for your own safety and make sure you are standing safely.
- Do not use the equipment on slippery floors or ladders.
- Do not use the equipment on scaffolds without fall protection.
- Wear suitable protective clothing and safety goggles protecting from splashing water.

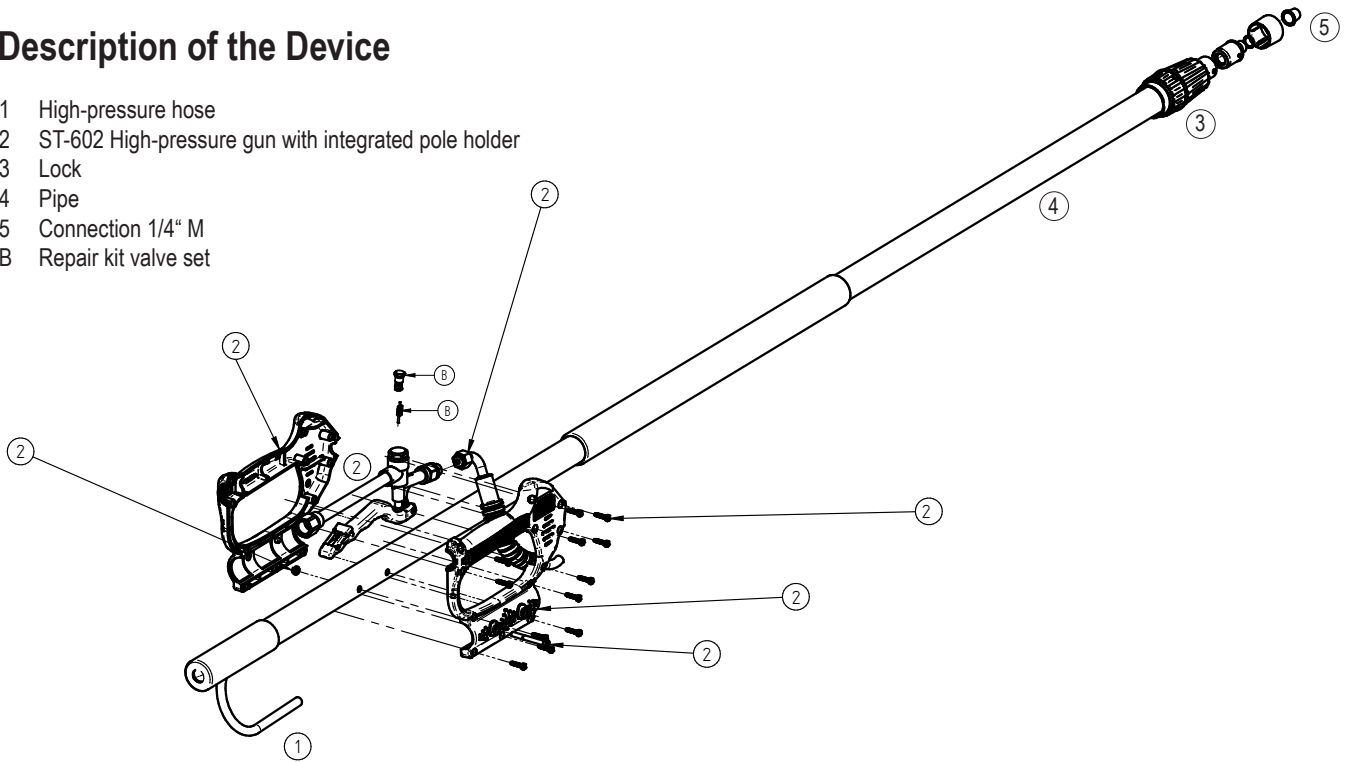


## Please note:

- The operator has to use the equipment as intended. The operator has to take the local conditions into account and pay attention to people in the vicinity when using the equipment.
- The equipment must not be used by children or persons who are not trained correspondingly.

## Description of the Device

- 1 High-pressure hose
- 2 ST-602 High-pressure gun with integrated pole holder
- 3 Lock
- 4 Pipe
- 5 Connection 1/4" M
- B Repair kit valve set



## Spare Parts

Item	Part number	Designation
1	39005320441	Hose 4,4 m
1	39005320812	Hose 8,15 m
1	39005320631	Hose 6,3 m
B	202000044	Repair kit valve set gun

## Technical data

Pressure (bar)	275
Temperature	100° C
Length	2.55 - 7.55 m
Weight (kg)	2.80 - 4.00
Length handle	530 mm
Material telescopic lance	Aluminium / fibreglass
Material extension	Stainless steel

## Commissioning / Operation

As an option, the high-pressure telescopic lance is supplied with a stainless steel extension. Screw it to the end of the telescopic lance and insert a suitable nozzle.



Use a strap for telescopic lances due to the recoil force.

### Preparation:

#### Set length

In order to set the length of the telescopic lance, unscrew the locking nut(s).

- Extent / retract the telescopic lance to the requested length.
- Tighten the locking nut by hand.

### Operation:

- Check the pressure and temperature ranges set at the high-pressure cleaner; adjust them to the values approved for the equipment if applicable.
- Unlock the safety catch at the manual spray gun by pressing it and pull the lever.

### Interrupt operation:

- Release the lever of the manual spray gun.
- Lock the lever of the manual spray gun using the safety catch..

### Stop operation:

- Release the lever of the manual spray gun.
- Switch off the high-pressure cleaner.
- Close the tap.
- Press the lever of the manual spray gun to reduce the pressure still available in the system.
- Lock the lever of the manual spray gun using the safety catch.
- Clean telescopic lance

## Maintenance and Care



### Hazard!

Prior to all maintenance and care operations at the telescopic lance, switch off the high-pressure cleaner and protect it from being switched on again. Allow the telescopic lance to cool down if it was used before.

### Cleaning:

#### General

- When using the telescopic lance with cleaning agent or disinfectant, rinse the telescopic lance with clear water when interrupting work for more than 1 hour.
- Use a lint-free cloth to clean the telescopic lance.
- Do not use any aggressive cleaning agents.

#### Clean the nozzle

#### Please note

Insufficient cleaning may result in clogging of the nozzle.

Even when the high-pressure cleaner is switched off, a small amount of liquid in the telescopic lance is under pressure.

- Point the telescopic lance with the nozzle away from your body and clean the nozzle with a thin wire or needle.

### Maintenance:

Maintenance and repair work must only be effected by trained personnel.