

Operating instruction

Original language: German

Product group: Accessories Item Number: all variants ST-550



Vers. May 26

www.rm-suttner.com

Technical data

Maximum permissible pressure	500 bar / 50 MPa
Maximum flow rate	45,0 l/min
Continuous water temperature	90°C
Short-term water temperature	max. 150°C
Ambient temperature	Up to max. 60°C
Dimensions (B / H / T)	176 x 152 x 200
Max. particle size	50µm

Abbreviations and symbols	
fm; m	Fm: internal thread; m: external thread
G	G Whitworth pipe thread to DIN ISO 228, equivalent to BSP (British Standard Pipe)
NPT	NPT National Pipe Thread (American thread standard)
kg	kg Kilogram

	The foot switch is designed for continuous use at temperatures up to approximately 90°C. For short-term applications, temperatures of up to 150°C are also permitted. If the water temperature exceeds 45°C, the user must wear suitable protective clothing, such as gloves, shoes and safety goggles. The currently applicable local safety regulations must always be observed.
	Please read this user manual thoroughly before using the appliance! Please keep the user manual in a safe place for future reference or for the next owner! This user manual has been compiled with the utmost care. However, SUTTNER GmbH cannot accept any liability for any errors in this user manual or their consequences!

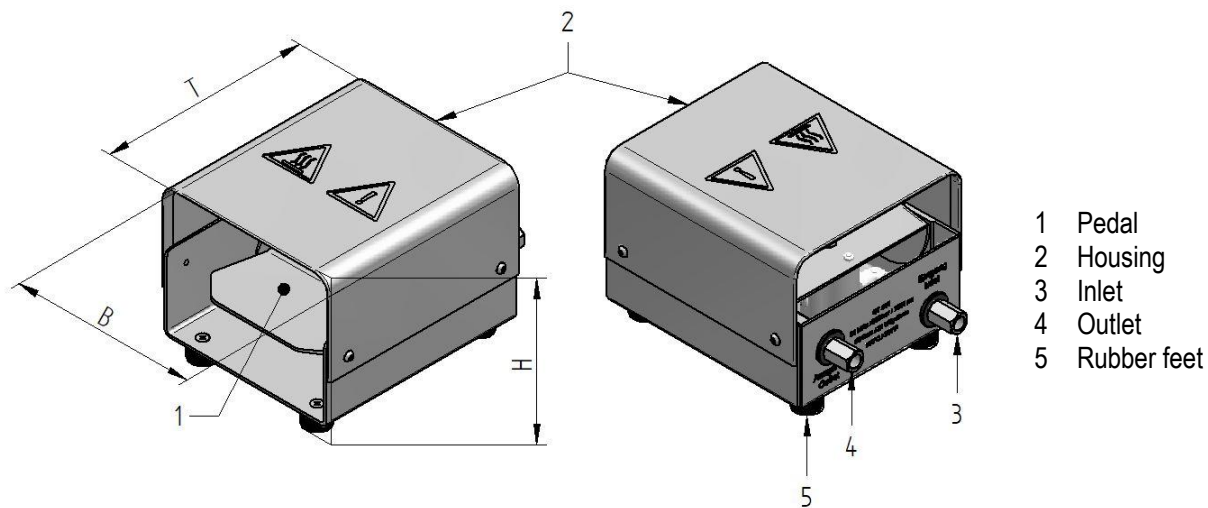
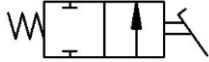


Illustration shows 200550600

Description

The foot switch

The ST-550 foot switch is designed for professional high-pressure cleaning (cold/hot water). It incorporates a 2/2-way valve, allowing control of the hydraulic flow rate (on/off). The switch automatically shuts off when the pedal is released, enabling hands-free operation. Both the foot switch and its connecting parts are made of corrosion-resistant material. The foot switch is enclosed in a housing to prevent accidental activation.



Intended use

The foot switch has been designed to perform specific functions as part of a complete system or machine. It is the responsibility of the manufacturer of the system or machine to ensure that the system functions correctly as a whole.

Only operate the foot switch within the specified pressure, flow rate and temperature ranges. Before starting work, check the settings on the high-pressure generator and adjust them if necessary. Once you have familiarised yourself with the safety instructions, operating the foot switch is very straightforward:

The foot switch must only be operated with the foot. Only flexible high-pressure hoses may be connected to the inlet and outlet. All safety regulations and standards for high-pressure cleaners, such as DIN EN 1829-1, apply. The foot switch is approved exclusively for use with Group II fluids in accordance with 2014/68/EC. These may include, for example, water and standard cleaning agents or disinfectants. For further details, see Directive 67/548/EC



The handling of flammable, explosive, corrosive or toxic substances is prohibited!

The foot switch must not be used with abrasive substances.

The foot switch must only be used when in perfect working order, with no structural modifications, for its intended purpose, and with due regard for safety and potential hazards, in accordance with these operating instructions. Only adults who have been trained in the use of high-pressure cleaners are permitted to use the foot switch.

To prevent damage to the foot switch, fit a fine filter with a recommended mesh size of 50 µm into the water supply to the high-pressure cleaner.

Please also observe the operating instructions for the devices and accessories connected to the foot switch, as well as the regulations applicable to the cleaning agents.

Normative references

- This product is a pressure-retaining component within the meaning of the Pressure Equipment Directive 2014/68/EC. Due to its operating parameters, it falls within the scope of Article 4(3) of this Directive ('good engineering practice') and therefore no declaration of conformity or CE marking is permitted!
- The product must not be installed in equipment that is required to comply with the Pressure Equipment Directive 2014/68/EC!
- The component is a standard component within the meaning of the Machinery Directive 2006/42/EC!

Symbols and their meanings



Hazard!

If these instructions are not followed there is a danger of physical injury, danger to life and material damage!



Trip hazard!



Please comply with the Operating Instructions!

Incorrect operation can lead to severe injury. Read the Operating Instructions before using the equipment



Wear safety gloves!



Wear protective goggles!



Risk of injury due to high pressure!

Do not point the nozzle at people or animals. Do not spray objects that contain hazardous substances, are live with electricity, or are fragile!



Description of imminent hazard and failure to avoid hazard will result death



Description of hazard and possible resulting injuries or death.



Description of hazard that could result in minor or moderate injury.

For your safety

This Suttner product is state of the art and complies with generally recognised health and safety regulations. Due to the high pressures and temperatures nonetheless, there is the danger of material damage and injury for users and other persons. Please comply with these Operating Instructions at all times and the relevant regulations for liquid jet sprayers.

For details regarding personal protective equipment, refer to the local prevention regulations "Personal protective equipment". Personal protective equipment includes for example overalls, head protection, easy-grip protective gloves and non-slip boots, metatarsal foot protection, respiratory protection, ear protection, eye or face protection.

Do not use the appliance if there are people within reach who are not wearing protective clothing.



Risk of injury from sprayed-out fluid!

- Before starting work, check the high-pressure system (spray device, hoses, fittings, etc.) for leaks and damage.
- Stop using the appliance immediately if any leaks or malfunctions occur.
- When open, the foot switch must not be blocked or prevented from closing in any other way
- Keep foreign objects away that could prevent the foot switch from closing or opening
- If you are using cleaning products, please read and follow the safety data sheets provided by the manufacturers.



Risk of burns and scalding from hot fluids!

If the water temperature exceeds 45°C, the user must wear suitable protective clothing, such as gloves, shoes and safety goggles.



Risk of injury from tripping!

Do not place the foot switch on walkways or driveways.

Assembly



Risk of injury!

If the high-pressure system has been used with hot water, allow the unit to cool down to below 45°C before starting any installation or maintenance work, as there is a risk of scalding or burns!

- Switch off the high-pressure device before carrying out any installation work on the high-pressure system.

- Secure the high-pressure device to prevent it from being switched on accidentally.
- Shut off the water supply.
- Ensure that any system sections and pipes that are to be opened are depressurised.
- Seal screw connections in accordance with your application using a suitable sealant such as Teflon tape or liquid sealant (see R+M catalogue, Chapter 06, Adhesives and Sealants).
- Fit suitable hose connections to the inlet and outlet. Secure the connections at the keyed surfaces to prevent them from twisting. (Tightening torque 25 Nm)
- Fit high-pressure hoses to the inlet and outlet. Observe the markings for inlet and outlet

Modification

Modifications of any kind to the foot switch are not permitted!

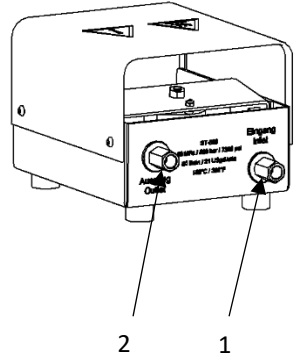
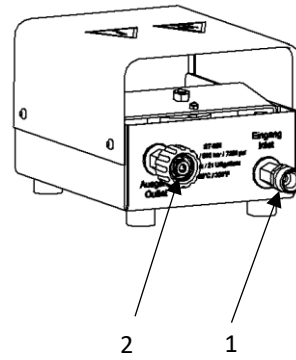
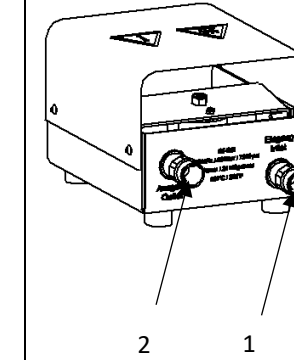
Operation

- Position the foot switch in front of you.
- Depress the pedal to open the valve within the foot switch.
- Release the pedal to close the valve within the foot switch. The foot switch remains under pressure.
- At the end of work: Switch off the high-pressure device. Briefly depress the foot switch to relieve any remaining pressure.
- Do not leave the foot switch unattended while the high-pressure generator is switched on.

Transport and Storage

Ensure that the foot switch is transported and stored in such a way as to protect it from dirt. Protect the foot switch from frost. Exposure to frost can damage the foot switch to such an extent that proper operation cannot be guaranteed.

Product variants

Foot switch ST-550			
Item no.	20 0550 600	20 0550 620	20 0550 640
Connection inlet (1)	G1/4 fm	M22x1,5 m	M24x1,5 m
Connection outlet (2)	G1/4 fm	M22x1,5 m	M24x1,5 m
Weight	4,560 kg	4,670 kg	4,560 kg
			

Cleaning

- Clean the device before taking extended breaks from use. Use a lint-free cloth for external cleaning and do not use harsh cleaning agents.
- If you use the device with cleaning agents or disinfectants, rinse it thoroughly before and after use and before taking extended breaks (of 1 hour or more).

Maintenance



Installation, maintenance and repair work must only be carried out by persons who have been trained in maintenance and repair work on high-pressure systems. Use only spare parts approved by Suttner GmbH. Use only high-pressure components (hoses, couplings, etc.) that are approved for the relevant pressure and temperature range

- Check annually that the foot switch is in a safe condition. Have any defects rectified immediately by a qualified technician.
- Are markings and labels legible?
- Does the foot switch close automatically?
- Does the foot switch show any signs of mechanical damage?

After no later than 1000 operating hours or one year, or after 500 operating hours or 6 months for hot water (above 90°C) and chemical applications: Check valve parts (seat, O-rings, back rings, valve piston, pressure piece) for damage and, if necessary, replace them completely with a Suttner repair kit.

After no later than 3000 operating hours or 3 years, or after 1500 operating hours or 18 months in the case of hot water (above 90°C) and chemical applications: Replace all valve parts (seal seat, O-rings, support rings, valve piston, pressure piece) with a Suttner repair kit.

Disposal



Please dispose of old appliances in an environmentally responsible manner.

Old appliances contain valuable recyclable materials that should be sent for recycling. Please therefore dispose of old appliances via appropriate collection points.

Manufacturer

Suttner GmbH
Alkenbrede 1
32657 Lemgo
Germany

info@rm-suttner.com
www.rm-suttner.com